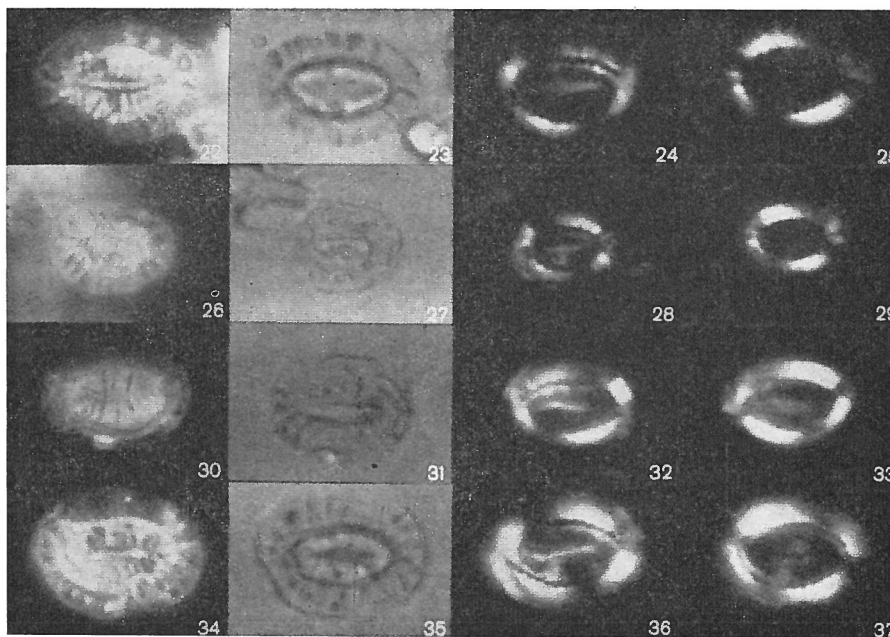


**Hornibrookina teuriensis** EDWARDS, 1973

1967 *Coccolithus* sp. A. Edwards, pl. 1, fig. 14, 15, 17, 18, N.Z. Journal  
Geology Geophysic, vol. 9, n° 4 pp. 481-490.



Figs. 22-37 — *Hornibrookina teuriensis* Edwards n. gen. n. sp. 22-25) Holo-  
type, TN1001/1, distal views. 26-29) Paratype, TN/1001/2, distal views. 30-  
33) Paratype, TN1001/5, slightly oblique distal views. 34-37) Paratype TN-  
1001/8 distal views. All figures x 2500 photomicrographs taken under dark  
field (column A), bright field (column B), cross-polarised, long axis = 0°  
(column C), and cross-polarised, long axis = 45° (column D) conditions.

**Description:**

Elongate oval, strongly distally domed, moderately robust placoliths as in the generic diagnosis with a central cycle of about 20 to 30 slender segments, a wall having a similar number of segments and two shields having a few more segments. The proximal shield is slightly smaller in diameter than the distal shield which has slightly subradial sutures. Length: 5-10  $\mu\text{m}$ , usually about 8  $\mu\text{m}$ .

**Remarks:**

In cross-polarized light the central cycle, wall and proximal shield show separate extinction patterns but only the wall and the adjacent part of the proximal shield are conspicuous in all plan view orientations.

The name is derived from the Teurian Stage of New Zealand which is named after its strato-  
type, Te Uri Stream, in southern Hawke's Bay.

### Type level:

Early Teurian (Danian- ?Montian).

Occurrence: Upper part of the Birch Foundation, 10 ft (3 m) below its contact with the Waipara Greensand. Within the early Teurian (Danian) *Chiasmolithus danicus* Zone of Edwards (1971) and the *Globigerina pauciloculata* Zone of Jenkins (1966).

Base *Chiasmolithus danicus* to base *Fasciculithus tympaniformis* interval of New Zealand (datum levels 2 and 9 respectively of Hornibrook & Edwards 1971), i.e., within the *Chiasmolithus danicus* and *Prinsius martinii* Zones of Edwards (1971) and the *Globigerina pauciloculata* Zone of Jenkins (1966).

This species was first recorded by the writer (Edwards 1967) from the Middle Waipara River section in samples S68/f1022-f1036 within the upper part of the Birch Formation and the lower part of the Waipara Greensand for an interval of 77 ft (23 m). It also occurs in samples N150/f1144-f1147 from the basal 21 ft (6.5 m) of the Teurian stratotype at Te Uri Stream. Hornibrook (1972) gives the stratigraphic positions of these samples together with their planktonic foraminiferal content and correlation.

### Type locality:

S68/f1028, N1138, Middle Waipara River below Doctors Gorge section, North Canterbury. Greenish grey, soft, glauconitic, very fine sandstone collected by G. Norris, November 1963, at grid reference S68/970135 (3rd ed. 1964) on the north bank just downstream from the bridge.

### Depository:

Physics and Engineering Laboratory, Electron Microscope Section, Lower Hutt. (Also at the Micropaleontology Section of the N.Z. Geological Survey).

Status	Register	Slide	Co-ordinates		Length ( $\mu\text{m}$ )
	Number	No.	Stage	Coverglass	
Holotype	TN1001/1	N1138/6	102/1249	100/126	9
Paratype	TN1001/2	N1138/6	102/1247	100/124	6
Paratype	TN1001/3	N1138/6	115/1184	087/061	9
Paratype	TN1001/4	N1138/5	112/1294	090/129	8
Paratype	TN1001/5	N1138/5	118/1291	084/126	8
Paratype	TN1001/6	N1138/5	119/1289	083/124	9
Paratype	TN1001/7	N1138/7	115/1211	085/052	6
Paratype	TN1001/8	N1138/7	115/1225	085/066	9
Paratype	TN1001/9	N1138/7	109/1252	091/093	7

### Author:

Edwards A.R., 1973, p. 77, figs. 22-37.

### Reference:

Key species of New Zealand calcareous nannofossils. New Zealand Journal of Geology and Geophysics, vol. 16, n<sup>o</sup> 1, pp. 68-89, figs. 1-88.