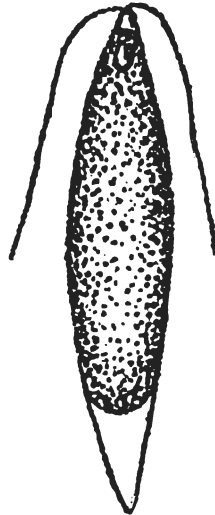


*Hymenomonas
fusiformis*

Hymenomonas fusiformis STOKES, 1888



24

Fig. 24 - *Hymenomonas fusiformis* n.sp.

Description:

Lorica subfusiform, less than four times as long as broad, widest centrally, the anterior border pointed, the posterior extremity obtusely and narrowly rounded; the body usually filling the entire lorica, but often somewhat removed from both extremities of the sheath; endoplasm yellow; contractile vesicle double, small, near the anterior extremity; nucleus obscure, apparently subcentrally located; flagella about one-half as long as the lorica. Dimensions: Length 1/690 in.

Remarks:

Habitat: Standing pond water, with *Sphagnum*. Movements rotatory on the longitudinal axis.

Type level:

Recent.

Type locality:

U.S.A.

Depository:

Not given.

Author:

Stokes A.C., 1888, p. 703; fig. 24.

Reference:

Notices of new Infusoria Flagellata from American fresh waters. J. Roy. Micr. Soc. 1888, pp. 698-704, 1 pl.