

**Laguncula dorotheae** BLACK, 1971

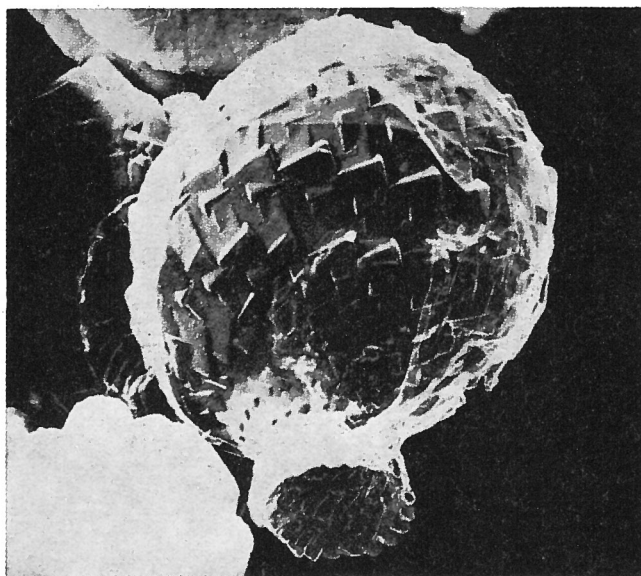


Fig. a — *Laguncula dorotheae* n. sp. Lateral view. Gault 26 ft above the base, borehole at Bay Farm, 5 miles SSW of Mildenhall, Suffolk. Holotype: No. 26377. x 10,000.

**Description:**

Hollow globular bodies with a thin shell composed of interpenetrating calcite rhombs and an aperture with an everted flange at the end of a short neck.

Dimensions of holotype (in microns): Equatorial diameter 6.0; total height 7.5; diameter of aperture 2.3.

**Type level:**

Middle and Upper Albian. Gault Clay.

**Type locality:**

Gault near Mildenhall, Suffolk, England.

**Depository:**

Sedgwick Museum, Cambridge. Holotype: SM 26377.

**Author:**

Black M., 1971, p. 327; pl. 2, fig. a.

**Reference:**

Problematical microfossils from the Gault Clay. Geol. Mag., vol. 108, n° 4, pp. 325-327, pls. 1-3.