

129. *Laguncula pitcherensis* Rai (2006)

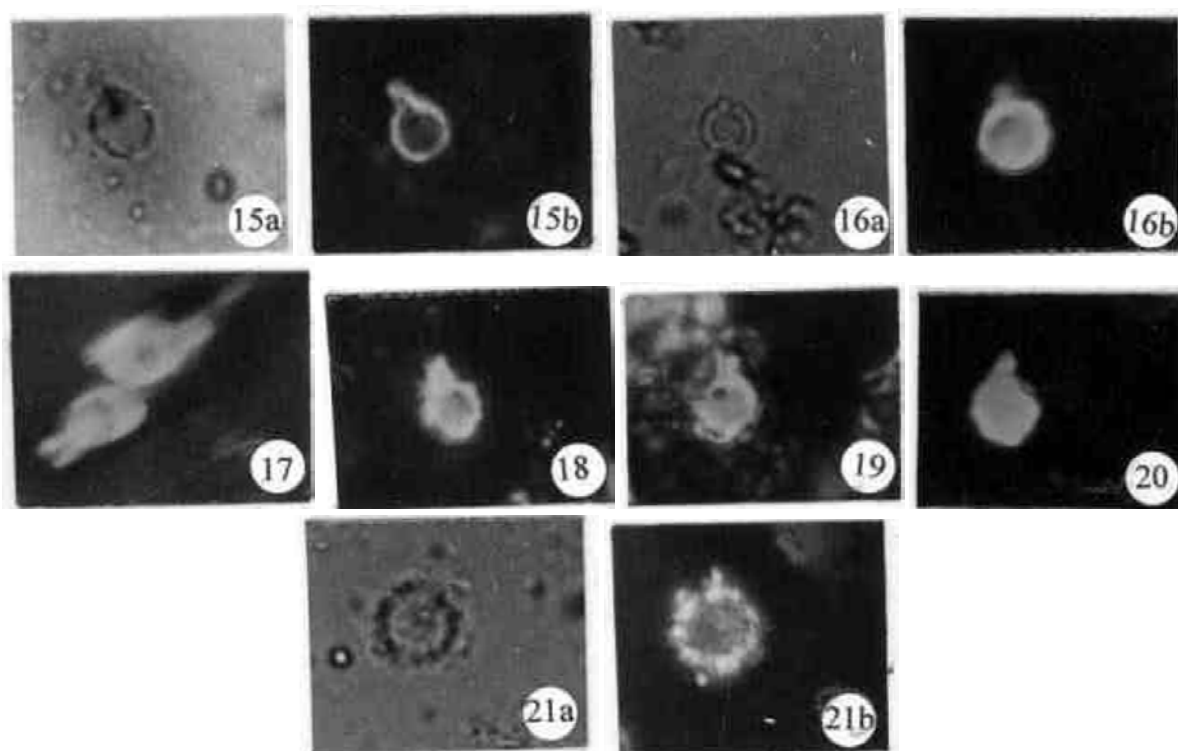


Fig. 8, 15a-b, 16a-b, 17-20, 21a-b

Holotype: 15a-b

Paratypes: 16a-b, 17-20, 21a-b

Name: After pitcher-like appearance.

Age: Early Middle Albian; CC8 *P. columnata* zone = NC8 *T. orionatus* total range zone.

Type horizon: Umia Formation, lower part of Bhuj Member.

Type locality: Kutch Basin (Near Bhuj town, opposite Jakh temple on Bhuj-Nakhatrana road section).

Diagnosis: Small, hollow, globular nannofossil with a narrow protuberance.

Description: Single-layered nannofossil surmounted by a distinct protuberance without neck or flaring at the tip. Under-crossed nicols, the nannofossil remains birefringent.

Comparison: *L. pitcherensis* n. sp. is comparable in shape with type species *L. dorotheae*, but specimens of *L. dorotheae* illustrated are nearly double in size and may not be conspecific on closer comparison. *L. pitcherensis* differs from *L. dorotheae* in possessing long, slender protuberance without any flaring at the tip.

The slide bearing BSIP Museum number 13071 is deposited at the Museum of Birbal Sahni Institute of Palaeobotany, Lucknow.

Rai, J., 2006. Discovery of nannofossils in a plant bed of the Bhuj Member, Kutch and its significance. *Current Science*, **91(4)**: 519-526.