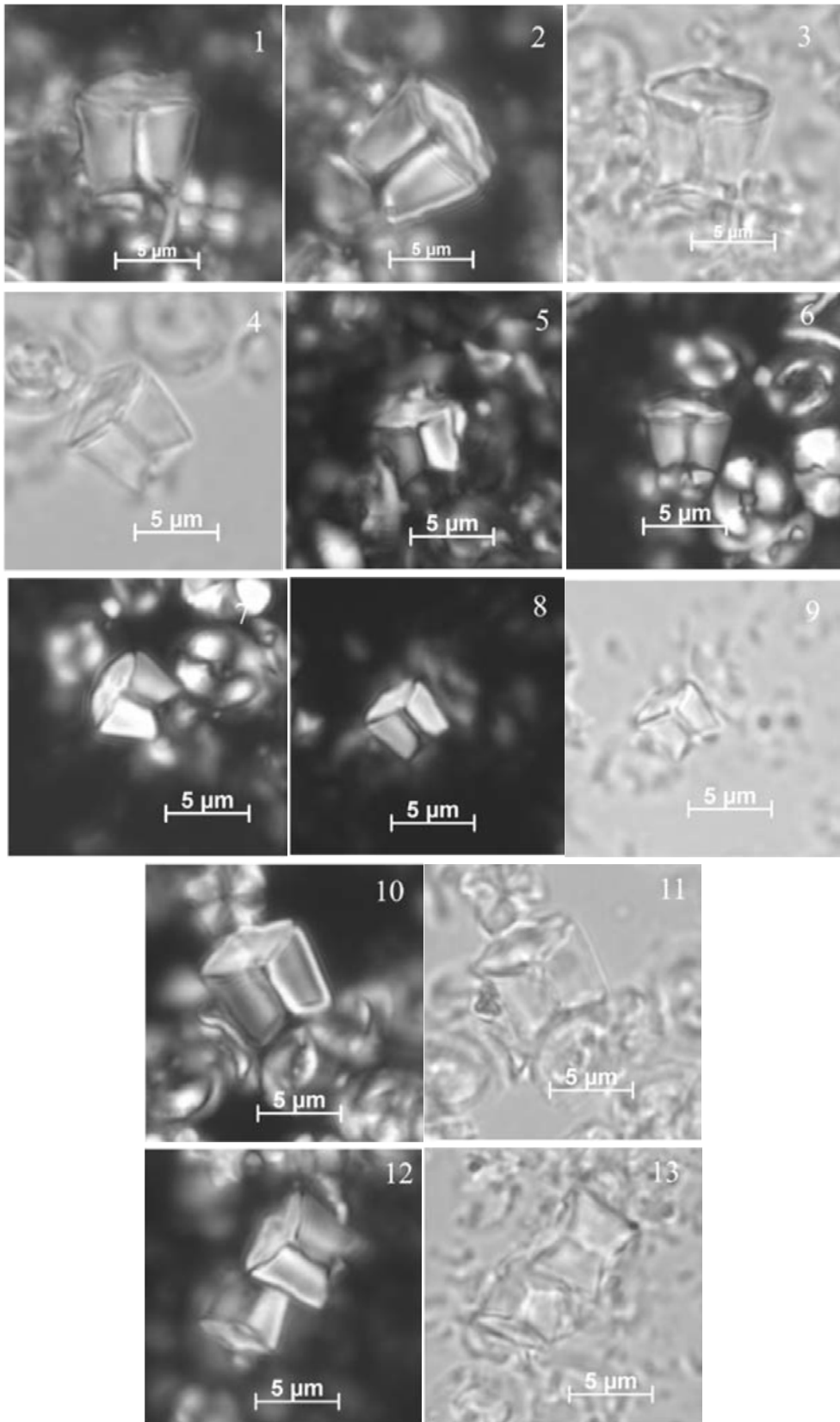


54. *Lithoptychius pileatus* (Bukry, 1973) Aubry (2011) emend. Monechi et al. (2013)



Pl. 5, figs 1-13

Pl. 5, figs. 1-13. *Lithoptychius pileatus* (Bukry), 1, 2 cross polarized, 3 bright field, 1262C-105, 86-87 (189.79 mcd), 4 bright field, 5 cross polarized, 1262C-10-4,50-51(187.93 mcd), 6 cross polarized, 7 bright field, 1262C-10-3, 113-114 (187.06 mcd), 8, 10, 12 cross polarized, 9, 11, 13 bright field, 1262C-10-2,119-120 (185.62 mcd).

Fasciculithus pileatus nov. sp. BUKRY (1973), p. 307, pl. 1, figs. 7-9, pl. 2, figs. 2, 3-5 (no Fig. 1). – PROTO DECIMA et al. (1978), pl. 12, figs. 3 a-c, 6. – AGNINI et al. (2007), pl. 2, fig. 2. – STEURBAUT and SZTRÁKOS (2008), pl. 3, figs. 25, 26. – BERNAOLA et al. (2009), fig. 5 (T).

Lithoptychius pileatus (Bukry) Aubry n. c. in AUBRY et al. 2011, pl. 1, fig. 19. – MONECHI et al. in press, pl. 1, fig. 19.

Remarks: *L. pileatus* in the original description of Bukry (1973) has been described as a species with “A large convex-topped, lens-shaped cap covers the entire top of the body and can extend beyond it”. Bukry (1973) included in *L. pileatus* a specimen (pl. 2, fig 1) showing a calyptra that extends beyond the column, a characteristic that fits well with the original description of *L. janii*. In order to avoid misinterpretation and to well characterize *L. pileatus* and differentiate it from *L. janii* we suggest the following emended description:

Emended description: *L. pileatus* is a medium sized species that consists of a distally flaring column and a lens-shaped calyptra. The diameter of the calyptra does not exceed the column. In side view (in cross-polarized light), a straight medium thickness line bisects the column and a concave dark line separates the column and the calyptra.

Differentiation: *L. pileatus* differs from *L. janii* for the convex lens-shaped calyptra, which does not exceed the column, while *L. janii* has concavo-convex shaped calyptra and the absence of a depression in the middle part of the calyptra.

Occurrence: At Site 1262, Zumaia and Qreiya sections the LO of *L. pileatus* is recorded in the upper part of NP4 Zone.

Monechi, S., Reale, V. Bernaola, G. & Balestra, B., 2012. Taxonomic review of early Paleocene fasciculiths. *Micropaleontology*, **58(4)**: 351-365.