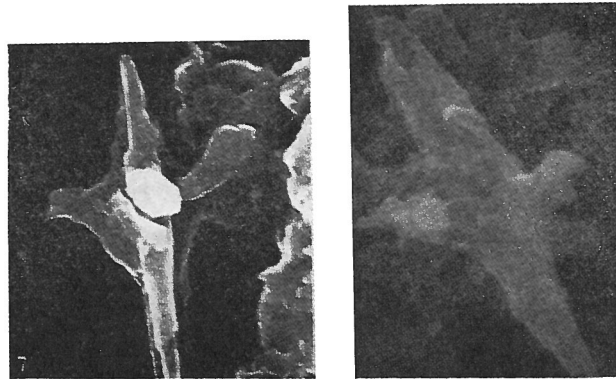


Lithravidites acutum VERBEEK & MANIVIT, 1977

1974, *Lithravidites alatus* THIERSTEIN, p. 641; pl. 3, figs. 5-11. Initial Reports DSDP, vol. 26.
1976, *Lithravidites alatus* THIERSTEIN, Verbeek p. 77; pl. 2, fig. 5a, Proc. Kon. Ned. Akad.
Wetensch., ser. B, vol. 79.



Figs. 7, 8 — *Lithravidites acutum* n. sp. 7) $\times 7000$, side view, Turonian, El Kef, Tunisia. 8) $\times 6100$, side view, Cenomanian, Cap Blanc Nez, France.

Description:

Diagnosis: A species of the genus *Lithravidites* with four distinct prominent processes, one near the centre of each blade.

Description: Calcareous nannofossils constructed of four long, narrow blades, which are attached to each other with one of the long sides. A prominent central process extends from the opposite long side of the blade. The four blades show equal size and shape. Both ends of the fossil are pointed.

Remarks:

Lithravidites acutum is easily recognized and distinguished from the other species of the genus *Lithravidites* by the presence of the four prominent processes.

Thierstein (1974) included specimens as described above in *L. alatus*, because he found the same range for the umbrella-shaped specimens and for those with processes. He reported also transitional specimens between the two forms, and noted that their ranges are restricted to the Cenomanian. However, the umbrella-shaped forms appeared to occur already much earlier, in the *Prediscosphaera columnata* Zone of mainly Middle Albian age in southern Spain (unpublished data). *L. acutum*, on the other hand, has never been reported from sediments older than Middle Cenomanian. Because of the distinct differences in shape and stratigraphic distribution the new species is separated from *L. alatus*.

Type level:

Middle Cenomanian to Middle Turonian.

Occurrence: *L. acutum* is reported by Thierstein (1974) from DSDP Leg 26 in the Indian Ocean. It has been observed in the upper part of the Cenomanian stratotype at Théligny in France (samples Fr 1162 and Fr 1498 in Verbeek 1976 a), in the section at Cap Blanc Nez, France, and in the section of El Kef, Tunisia (samples Kef 1-10, Verbeek 1976 b).

Composite range: Middle Cenomanian to Middle Turonian.

Type locality:

Type locality of the specimens illustrated by Thierstein (1974): Indian Ocean, DSDP - Leg 26, Site 258.

Depository:

Not given.

Holotype: The specimen illustrated by Thierstein, 1974, pl. 3, fig. 5-7, 9-11; Cenomanian of DSDP Leg 26, Site 258, Sample 14, CC, from the Indian Ocean.

Author:

Verbeek J. W. and Manivit H. in Manivit H., Perch-Nielsen K., Prins B. and Verbeek J. W., 1977, p. 176; pl. 1, figs. 7, 8.

Reference:

Mid Cretaceous calcareous nannofossil biostratigraphy. Proc. Kon. Ned. Akad. Wetensch., ser. B, vol. 80, no. 3, pp. 169-181, 1 pl.