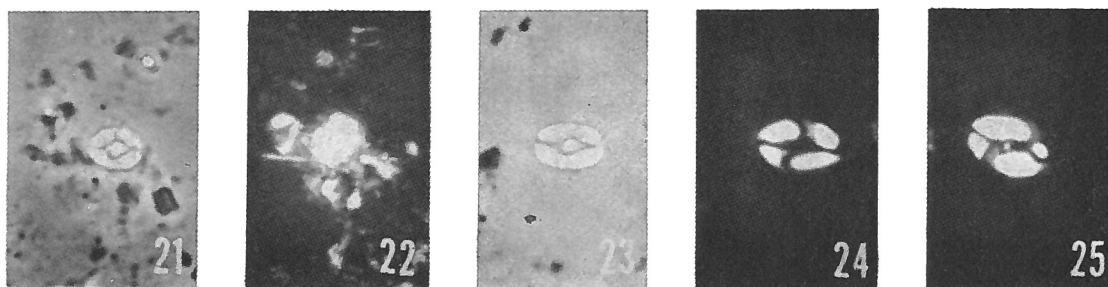


**Munarinus lesliae** RISATTI, 1973



Figs. 21-25 — *Munarinus lesliae* n. sp. 21) phase, 2500 x; 22) x-nicols. Holotype: 23) phase, 2500 x; 24, 25) x-nicols.

**Description:**

Diagnosis: Elongated, elliptical form consisting of two, slightly bent rods joined at their ends and enclosing a circular element.

Description: Elongated oval in outline, consisting of two rods slightly bowed outward at their midpoints, which are joined at their ends, and which enclose a small circular element. The rods are each made up of four elements, whose sutures are often visible.

Dimensions: About 5.5-6.0  $\mu$ .

**Remarks:**

The elongate form and perforations in the central area distinguish this species from *M. marszaleki*.

**Type level:**

Upper Cretaceous.

Occurrence: Sample 224 from the Bluffport Marl. Sporadically through samples 245 from the Ripley in the Rock Hill section and throughout the Chapel Hill section.

**Type locality:**

Mississippi, U.S.A.

**Depository:**

Mississippi State University, Geology Department.  
Holotype: M.S.U. 2112.

**Author:**

Risatti J.B., 1973, p. 30; pl. 5, figs. 21-25.

**Reference:**

Nannoplankton biostratigraphy of the Upper Bluffport Marl-Lower Prairie Bluff Chalk interval (Upper Cretaceous), in Mississippi. Gulf Coast Section, Society of Economic Paleontologist and Mineralogist. Proceedings of Symposium on Calcareous Nannofossils. Smith L.A. and Hardenbol J. Ed., pp. 8-57. 4 figs., 3 tabs., 10 pls.