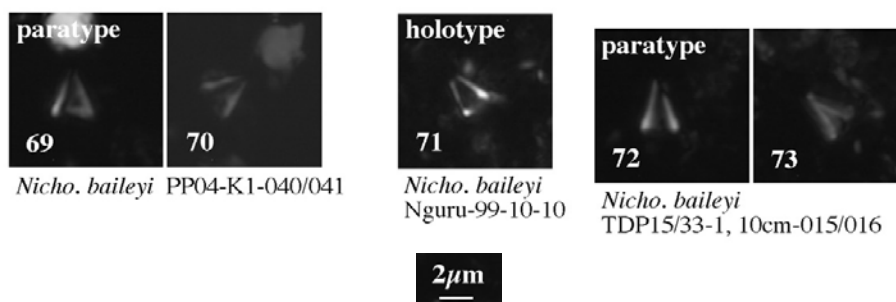


149. *Nicholasia baileyi* Lees (2007)



Pl. 13, figs 69-73

**Derivation of name:** After Dr. Trevor Bailey (Natural History Museum of Wales, Cardiff), Cenozoic palaeoceanographer on the TDP team.

**Diagnosis:** As for the genus. This species is very small. The 'spine' appears to terminate bluntly and is generally dark.

**Holotype:** Pl. 13, fig. 71.

**Holotype dimensions:** H = 2.20µm, W = 1.76µm.

**Paratypes:** Pl. 13, figs 69, 70, 72, 73.

**Type locality:** Nguru-mahamba, SW of Lindi town, coastal Tanzania.

**Type level:** Nguru-99-10; UC15eTP, Late Campanian.

**Occurrence:** Nguru-mahamba, Late Campanian (UC15eTP); TDP15, Early Turonian (UC6b); Matandu Bridge (Kilwa), Middle-Late Turonian (UC9a).

Lees, J. A. 2007. New and rarely reported calcareous nannofossils from the Late Cretaceous of coastal Tanzania; outcrop samples and Tanzania Drilling Project Sites 5, 9 and 15. *Journal of Nannoplankton Research*, **29(1)**: 39-65.