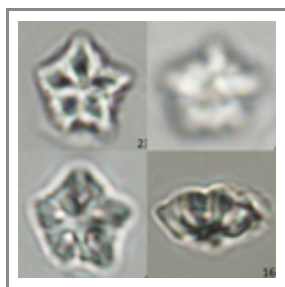


# *Olladiscoaster cruxii*



Varol & Bowman 2024  
pl20 f01-24.jpg



Varol & Bowman 2024 fig  
8-07.JPG



Varol & Bowman 2024 fig  
8-08.JPG

## Current identification:

## Compiled data

*Citation:* *Olladiscoaster cruxii* Varol & Bowman 2024

*Taxonomic rank:* species

*Type specimens:* Holotype: Plate 20, Figs. 1-24 (same specimen in mobile mount).

*Type age (chronostrat):* Zone NN6, Middle Miocene.

*Type locality:* IODP Leg 354, Hole 1451B (Ninetyeast Ridge, Bengal Fan), northern Indian Ocean.

*Type repository:* Varol Research, Llandudno

*Repository Country:* Wales

## Original Description

Stellate *Olladiscoaster* has an asymmetrical, pentagonal outline and diamond-shaped segments with quasi-arms. On the distal side, the distinct sutural ridges are created by the deep cavities. The sutural ridges are gently raised towards the centre and capped by boomerang-shaped distal covers. The distinct proximal ridges without a knob decorate the gently bulged proximal side. At the side view, *Olladiscoaster cruxii* resembles a boat.

## Size:

Dimensions of holotype: Maximum diameter: 8.13  $\mu\text{m}$ , Maximum height: 3.60  $\mu\text{m}$ ; Diameter of the central area: 4.81  $\mu\text{m}$ , Length of the quasi-arm: 1.66  $\mu\text{m}$  (measurements from bright field micrograph).

## Etymology:

In honour of Dr Jason A. Crux, nanofossil specialist, San Antonio, Texas, USA.

## Extra details from original publication

*Remarks:* *Olladiscoaster cruxii* has an asymmetrical pentagonal outline and differs from all other *Olladiscoaster* species.

*Occurrence:* This species is recorded from IODP Leg 354, Hole 1451B, Ninetyeast Ridge, Bengal Fan, Indian Ocean and various commercial oil wells in the Gulf of Mexico.

*Stratigraphic range:* Middle Miocene (Zone NN6).

## References: ?

Varol, O. & Bowman, A. R. (2024). The new Middle Miocene genus *Olladiscoaster*, and related and associated



nannotax

*Olladiscoaster cruxii*: Farinacci & Howe Catalog entry.  
PDF copy made: 14-1-2025

**Taxon Search:**

---