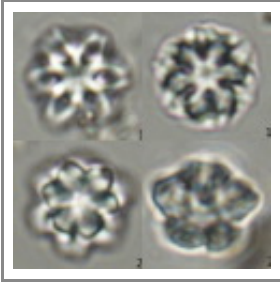
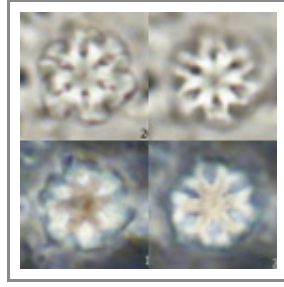


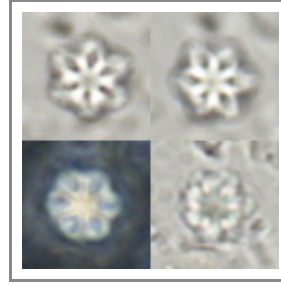
# *Olladiscoaster lepidus*



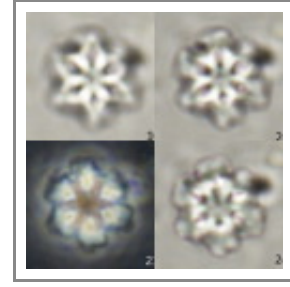
Varol & Bowman 2024  
pl21 f17-24.jpg



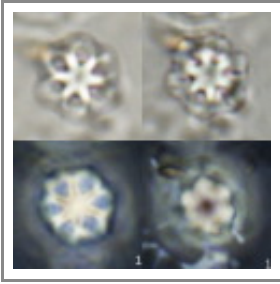
Varol & Bowman 2024  
pl22 f17-24.jpg



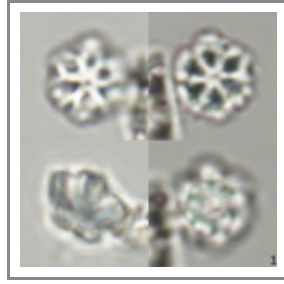
Varol & Bowman 2024  
pl23 f01-12.jpg



Varol & Bowman 2024  
pl23 f13-24.jpg



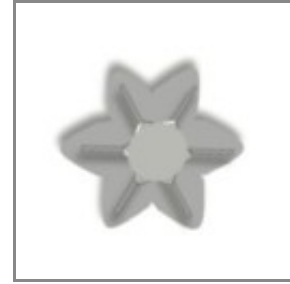
Varol & Bowman 2024  
pl24 f01-12.jpg



Varol & Bowman 2024  
pl22 f01-16.jpg



Varol & Bowman 2024 fig  
8-05.JPG



Varol & Bowman 2024 fig  
8-06.JPG

## Current identification:

## Compiled data

*Citation:* *Olladiscoaster lepidus* Varol & Bowman 2024

*Taxonomic rank:* species

*Type specimens:* Holotype: Plate 22, Figs. 1-16 (same specimen in mobile mount).

*Type age (chronostrat):* Zone NN6, Middle Miocene.

*Type locality:* USGS-NASA Langley core Hampton, VA, USA.

*Type repository:* Varol Research, Llandudno

*Repository Country:* Wales

## Original Description

Hexagonal stellate species of *Olladiscoaster* have diamond-shaped segments with quasi-arms. The tips of the segments are often rounded. On the distal side, the distinct sutural ridges are created by the deep cavities. The sutural ridges are raised towards the centre and capped by kite-shaped distal covers. The distinct proximal ridges with a petaloid knob decorate the bulged proximal side. At the side view of *Olladiscoaster lepidus*, a relatively low proximal knob with a depression is visible.

## Size:

Dimensions of holotype: Maximum diameter: 6.03  $\mu\text{m}$ , Maximum height: 3.60  $\mu\text{m}$ ; Diameter of the central area: 3.89  $\mu\text{m}$ , Diameter of the proximal knob: 3.89  $\mu\text{m}$ , Height of the proximal knob: 1.19  $\mu\text{m}$ , Length of the quasi-arm: 1.07  $\mu\text{m}$ , (measurements from bright field micrograph).

## Etymology:

From the Latin *lepidus*, glamorous - refers to its charming appearance.

## Extra details from original publication

*Remarks:* *Olladiscoaster lepidus* differs from *Olladiscoaster molae* by lacking the windmill-like appearance of segments. *Olladiscoaster lepidus* is distinguished from *Olladiscoaster superbus* and *Olladiscoaster vestiguum* by having diamond-shaped rather than kite-shaped segments. Kite-shaped distal covers in *Olladiscoaster lepidus* cap the sutural ridges, whereas boomerang-shaped distal covers cap the sutural ridges of *Olladiscoaster superbus* and *Olladiscoaster vestiguum*.

*Occurrence:* This species is recorded from IODP Leg 354, Hole 1451B, Ninetyeast Ridge, Bengal Fan, Indian Ocean, USGS-NASA Langley core 134.4 m, Hampton, VA, USA and various commercial oil wells in the Gulf of Mexico.

*Stratigraphic range:* Middle Miocene (Zone NN6).

## References: ?

Varol, O. & Bowman, A. R. (2024). The new Middle Miocene genus *Olladiscoaster*, and related and associated discoasters. *Grzybowski Foundation Special Publication*. **28**: 1-102. [gs](#)



nannotax

*Olladiscoaster lepidus*: Farinacci & Howe Catalog entry.  
PDF copy made: 14-1-2025

**Taxon Search:**