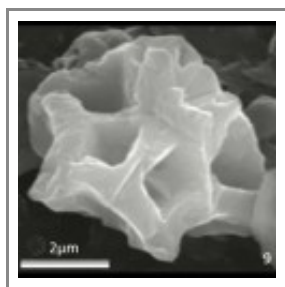
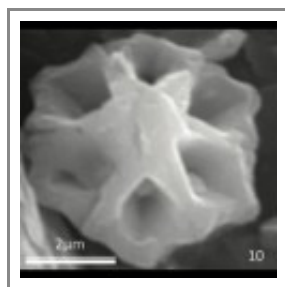


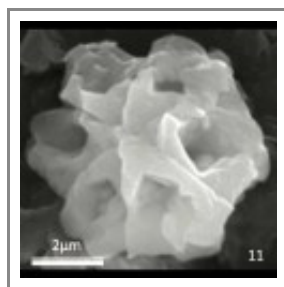
Olladiscoaster zucchiaie



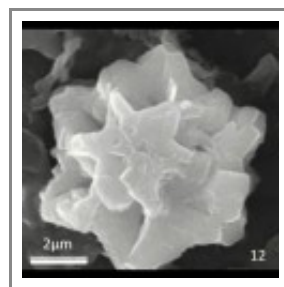
Varol & Bowman 2024
pl01 09.jpg



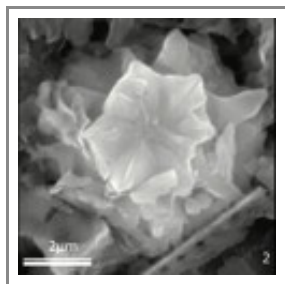
Varol & Bowman 2024
pl01 10.jpg



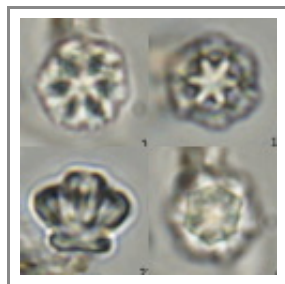
Varol & Bowman 2024
pl01 11.jpg



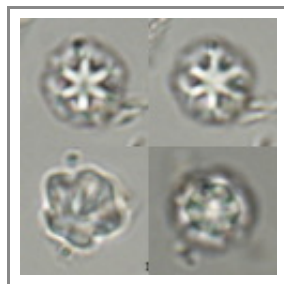
Varol & Bowman 2024
pl01 12.jpg



Varol & Bowman 2024
pl01 02.jpg



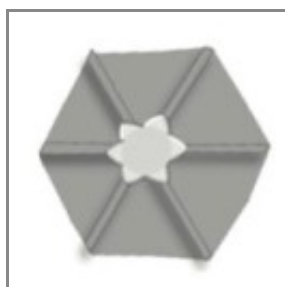
Varol & Bowman 2024
pl19 f01-24.jpg



Varol & Bowman 2024
pl21 f01-16.jpg



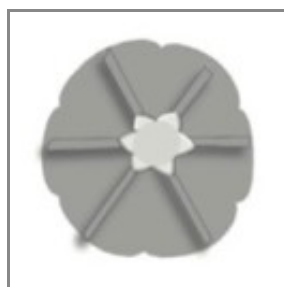
Varol & Bowman 2024 fig
7-05.JPG



Varol & Bowman 2024 fig
7-06.JPG



Varol & Bowman 2024 fig
7-07.JPG



Varol & Bowman 2024 fig
7-08.JPG

Current identification:

Compiled data

Citation: *Olladiscoaster zucchiaie* Varol & Bowman 2024

Taxonomic rank: species

Type specimens: Holotype: Plate 19, Figs. 1-24 (same specimen in mobile mount).

Type age (chronostrat): Zone NN6, Middle Miocene.

Standardised type level: 122_MIDDLE MIOCENE

Type locality: USGS-NASA Langley core Hampton, VA, USA.

Type repository: Varol Research, Llandudno

Repository Country: Wales

Original Description

Circular to hexagonal species of *Olladiscoaster* have segments without arms. On the distal side, the distinct sutural ridges are created by the deep cavities. The sutural ridges are raised towards the centre and capped by kite-shaped distal covers. The distinct proximal ridges with a hexagon-stellate knob at the centre decorate the bulged proximal side. In side view, *Olladiscoaster zucchiaie* resembles a bouquet.

Size:

Dimensions of holotype: Maximum diameter: 6.46 μm , Maximum height: 5.43 μm ; Diameter of the proximal knob: 4.04 μm , Height of the proximal knob: 1.33 μm (measurements from bright field micrograph).

Etymology:

In honour of the late Donata Zucchi, a nannofossil specialist from Italy.

Extra details from original publication

Remarks: *Olladiscoaster zucchiaae* differs from *Olladiscoaster cruzii*, *Olladiscoaster catinatus* and *Olladiscoaster asterilithos* by having a kite shape distal cover, whereas the latter species have boomerang shape distal covers. *Olladiscoaster zucchiaae* is distinguished from *Olladiscoaster bordii* by having a hexagon-stellate proximal knob, whilst the latter species have petaloid proximal knobs. *Olladiscoaster zucchiaae* is differentiated from *Olladiscoaster exagonikoasteri* and *Olladiscoaster perplexus* by having sutural ridges bisecting the periphery at the middle, whilst later species have sutural ridges almost aligned with the vertices. Moreover, *Olladiscoaster exagonikoasteri* lacks a proximal knob.

Occurrence: This species is recorded from ODP Leg 154, Hole 926A Ceara Rise, Atlantic Ocean, IODP Leg 354, Hole 1451B, Ninetyeast Ridge, Bengal Fan, Indian Ocean, USGS-NASA Langley core 134.4 m, Hampton, VA, USA and various commercial oil wells in the Gulf of Mexico.

Stratigraphic range: Middle Miocene (Zones NN5-NN7).

Editors' Notes

The species was named for Donata Zucchi, a nannofossil palaeontologist. The name is consistently given in the text as *zucciaae* but this is a correctable orthographic error (ICN Art 60.1, see example 7). So the correct name is *O. zucchiaae* and the spelling has been corrected here. [JRY 2025]

References?

Varol, O. & Bowman, A. R. (2024). The new Middle Miocene genus *Olladiscoaster*, and related and associated discoasters. *Grzybowski Foundation Special Publication*. **28**: 1-102. [gs](#)



nannotax

Olladiscoaster zucchiaae: Farinacci & Howe Catalog entry.

PDF copy made: 14-1-2025

Taxon Search: