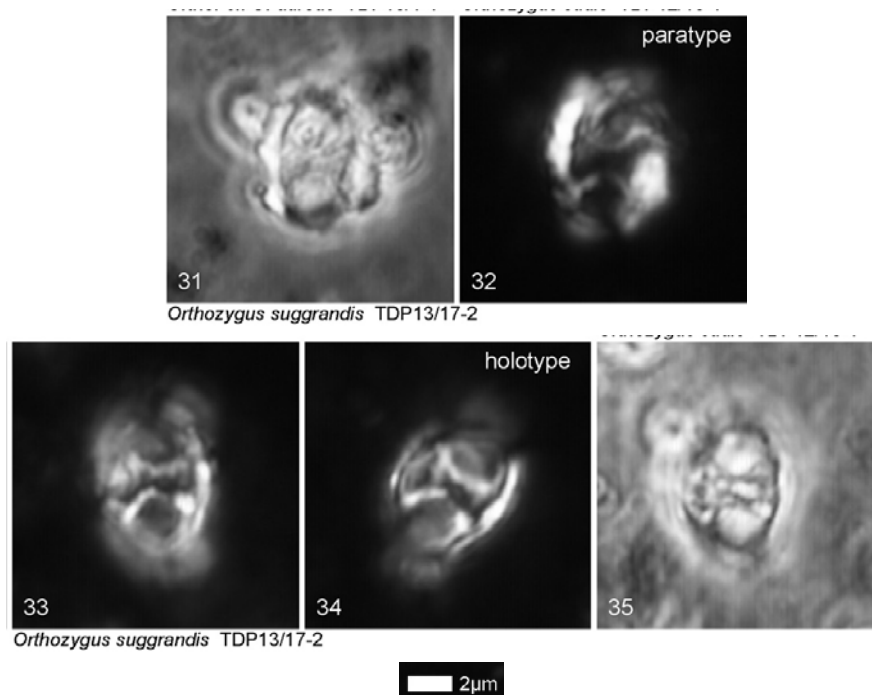


155. *Orthozygus suggrandis* Bown & Dunkley Jones (2006)



Pl. 6, figs 31-35

**Derivation of name:** From *suggrandis*, meaning 'somewhat large', referring to the relative size of this holococcolith.

**Diagnosis:** A large, rather coarsely constructed, elliptical holococcolith with a central-area spanned by a transverse, bridge-like structure that broadens at each end. The rim and bridge are crystallographically disjunct.

**Dimensions:** L = 6.9-7.0µm.

**Holotype:** Pl. 6, fig. 34 (figs 33, 35 same specimen).

**Paratype:** Pl. 6, fig. 32 (fig. 31 same specimen).

**Type locality:** TDP Site 13, Pande, Tanzania.

**Type level:** Middle Eocene, Sample TDP13/17-2, 16cm (Subzone NP15c).

**Occurrence:** NP15c; TDP Site 13.

Bown, P.R. & Dunkley Jones, T. 2006: New Palaeogene calcareous nannofossil taxa from coastal Tanzania: Tanzania Drilling Project Sites 11 to 14. *Journal of Nannoplankton Research*, **28(1)**: 17-34.