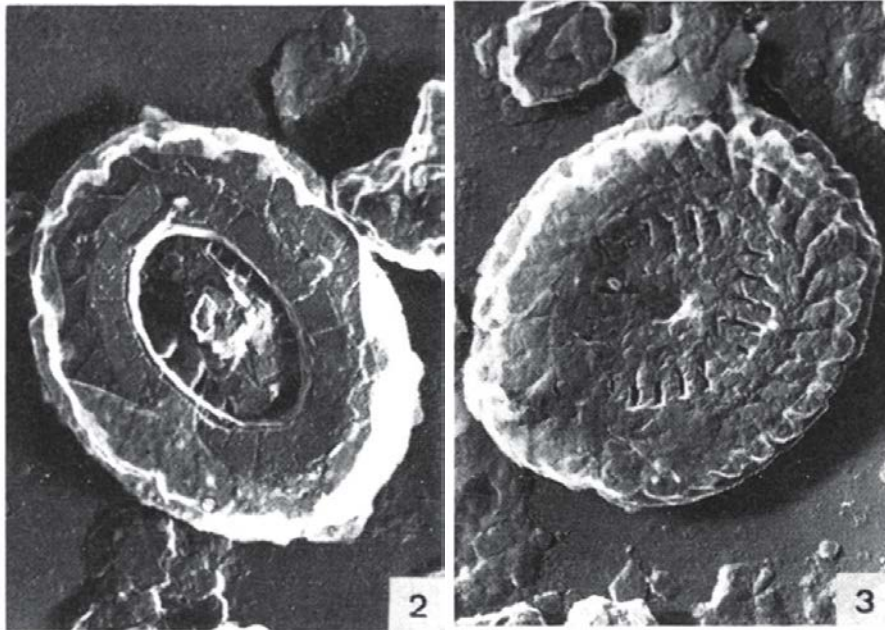


64. *Paleopontosphaera veterna* Prins (1969) ex Rood et al. (1973)



Pl. III, figs 2-3

Fig. 2. *Paleopontosphaera veterna* Prins, distal view, Holotype 55.11.1, Port-en-Bessin (Normandy), Bathonian, Fullers Earth, zigzag zone, x 12,000.

Fig. 3. *Paleopontosphaera veterna* Prins, proximal view, Paratype 55.10.2, Port-en-Bessin (Normandy), Bathonian, Fullers Earth, zigzag zone, x 12,000.

1965b *Paleopontosphaera dubia* Noel, of Noel, Pl. 7, Fig. 13

1969 *Paleopontosphaera veterna* Prins, Pl. II, Fig. 9, p. 554 (invalid)

Diagnosis: A species of *Paleopontosphaera* with a spine supported on a cross with four short arms.

Description: The margin is about one third the width of the coccolith. The central spine is short, and contains a circular longitudinal channel. This spine is supported on a cross with four short arms aligned in the major and minor axes of the ellipse. Some electron micrographs suggest the presence of diagonal bars in each of the four minute apertures formed by the central cross.

Remarks: Prins (1969) indicated that the specimen he figured as *Paleopontosphaera veterna* has some sort of central cross beneath a more distinct central spine.

Holotype: 55.11.1.

Paratype: 55.10.2.

Dimensions: length 3.2 μ , width 2.5 μ .

Type locality: Port-en-Bessin (Normandy).

Type level: Bathonian, Fullers Earth, zigzag zone.

Rood, A.P., Hay, W.W. & Barnard, T., 1973. Electron microscope studies of lower and middle Jurassic coccoliths. *Eclogae Geologicae Helvetiae*, **66(2)**: 365-382.