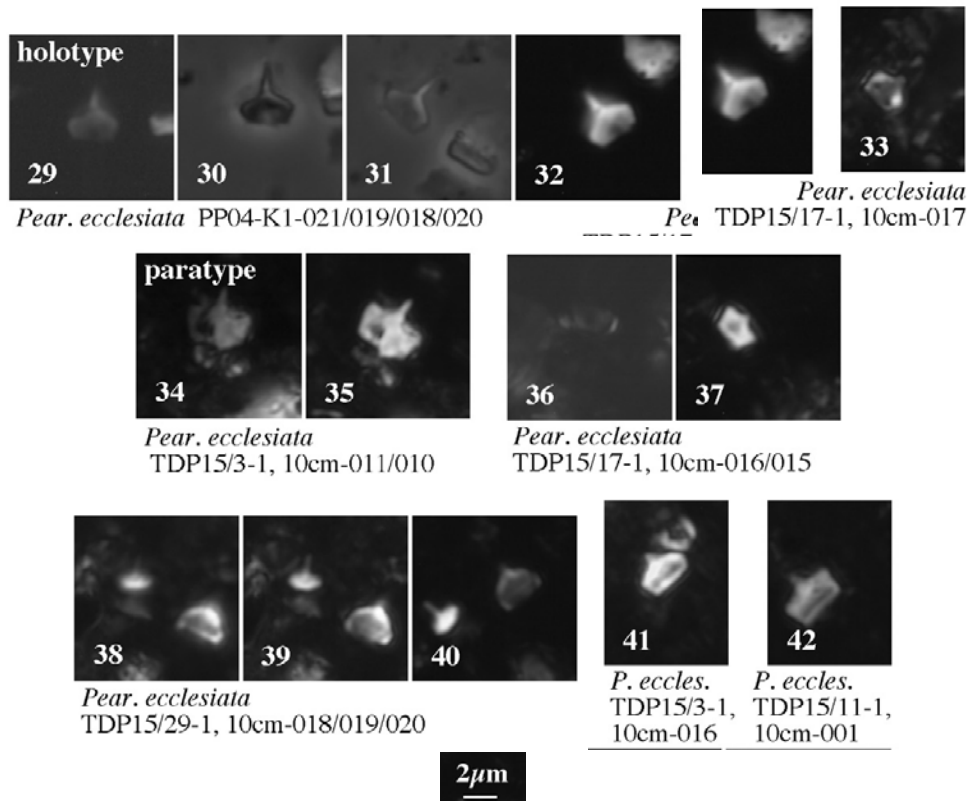


160. *Pearsonia ecclesiata* Lees (2007)



Pl. 11, figs 29-42

Derivation of name: From the Latin '*ecclesia*', meaning 'church', and '*atus*', meaning 'likeness to', referring to its resemblance to a church with a spire in side view.

Diagnosis: A very small species of *Pearsonia* with a church-plus-spire-shaped outline in side view. At 0°, the liths are dark in XPL, becoming bright when rotated, with the base-plate and spine behaving as a single crystal.

Holotype: Pl. 11, figs 29-32.

Holotype dimensions: H = 3.08µm, L = 2.64µm.

Paratype: Pl. 11, figs 34, 35.

Type locality: Matandu Bridge, west of Kilwa Kivinje, coastal Tanzania.

Type level: PP04-K1; UC9a, Middle-Late Turonian.

Occurrence: Matandu Bridge (Kilwa), Middle-Late Turonian (UC9a); TDP15, Early Turonian (UC6b).

Lees, J. A. 2007. New and rarely reported calcareous nannofossils from the Late Cretaceous of coastal Tanzania; outcrop samples and Tanzania Drilling Project Sites 5, 9 and 15. *Journal of Nannoplankton Research*, **29(1)**: 39-65.