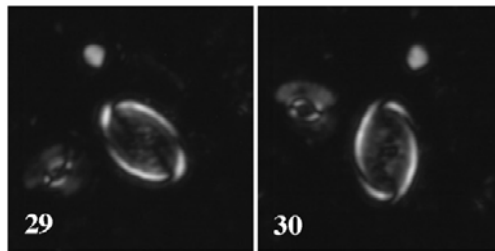
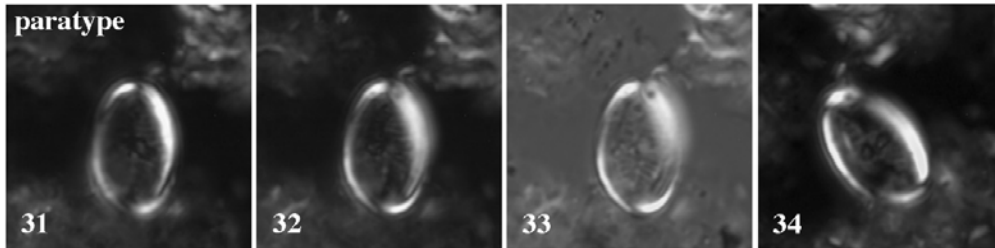


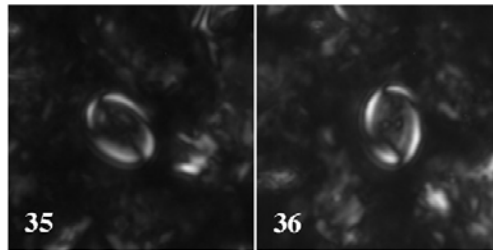
164. *Percivalia? dunkleyjonesii* Lees (2007)



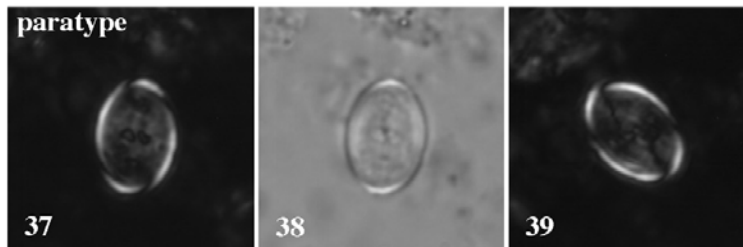
Perc.? dunkleyjonesii Nguru-99-4-030/031



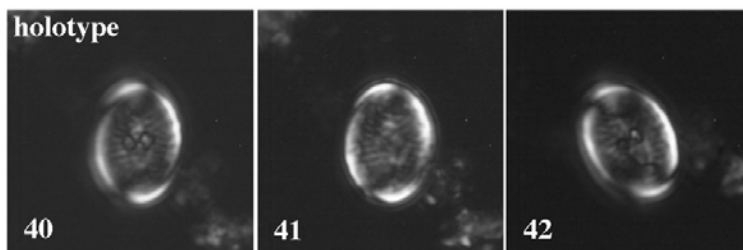
Perc.? dunkleyjonesii TDP15/9-1, 10cm-049/050/051(PC)/052



Perc.? dunkleyjonesii TDP15/15-1, 10cm-086/087



Perc.? dunkleyjonesii TDP15/25-1, 10cm-020/022(PC)/023



Perc.? dunkleyjonesii TDP15/25-1, 10cm-024/025/026

2µm

Pl. 3, figs 29-42

Derivation of name: After Mr. Tom Dunkley Jones (UCL), Cenozoic nannopalaentologist and roustabout on the TDP team.

Diagnosis: This medium- sized species possesses a narrow, bicyclic rim and a central plate of laterally-oriented laths at the centre of which is an indistinct cross. This axial cross has two distinctive 'buttons', outlined by dark extinction lines, making up the short-axis bars. The 'buttons' are visible when the coccolith is oriented both 0° and 45° . The entire central area shows low birefringence.

Differentiation: This new species is distinguished from all other *Percivalia* species by the distinctive 'buttons' and central-area laths.

Remarks: The rim and inner cycle of this species are somewhat reminiscent of *Percivalia*, although scanning electron microscopy is needed to confirm the generic assignment.

Holotype: Pl. 3, figs 40-42.

Holotype dimensions: L = 6.82 μ m, W= 4.84 μ m.

Paratypes: Pl. 3, figs 31-34, 37-39.

Type locality: TDP15, Maghreda Swamp, NW of Kilwa Kivinje, coastal Tanzania.

Type level: TDP15/25-1, 10cm; UC6b, Early Turonian.

Occurrence: TDP15, Early Turonian (UC6b); Nguru-mahamba, Early Cenomanian (UC1a-2a).

Lees, J. A. 2007. New and rarely reported calcareous nannofossils from the Late Cretaceous of coastal Tanzania; outcrop samples and Tanzania Drilling Project Sites 5, 9 and 15. *Journal of Nannoplankton Research*, **29(1)**: 39-65.