

Perissocyclus fletcheri BLACK, 1971

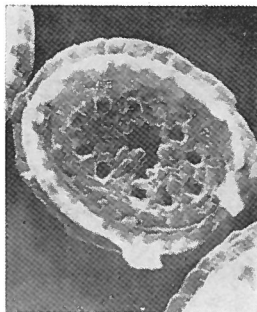


Fig. 3 — *Perissocyclus fletcheri* n. sp. Blue Beds, D6A, Speeton. Holotype: H.721/21593. Proximal view. x 6000.

Description:

A species of *Perissocyclus* with one or two rings of small windows, the diameter of the outer ring being equal to onehalf or less of the diameter of the coccolith.

Size: Distal shield $5.2 \times 4.0 \mu$ to $6.2 \times 4.9 \mu$, 26-34 rays, inner ring of shield $3.7 \times 2.7 \mu$ to $4.7 \times 3.4 \mu$; central area $3.2 \times 2.2 \mu$ to $4.1 \times 2.9 \mu$, 10-16 windows as a rule (sometimes more); proximal shield $4.6 \times 3.4 \mu$ to $5.6 \times 4.2 \mu$. Specimens measured, 6.

Remarks:

The windows are smaller than those of the other two species, and usually lie in two rings; the inner ring is apt to be irregular and imperfectly developed. The diameter of the outer ring is never appreciably more than half the diameter of the coccolith, and is usually less.

Type level:

Berriasian.

Occurrence: In the Blue Beds D6A and the Compound Nodular Bed D1 at Speeton.

Type locality:

Bed D6A of the Speeton Clay at Speeton, England.

Depository:

Sedgwick Museum, Cambridge. Holotype: H.721/21593.

Author:

Black M., 1971, p. 406; pl. 32, fig. 3.

Reference:

Coccoliths of the Speeton Clay and Sutterby Marl. Proc. Yorks. Geol. Soc., vol. 38, part 3, n° 18, pp. 381-424, pls. 30-34, 3 tables.