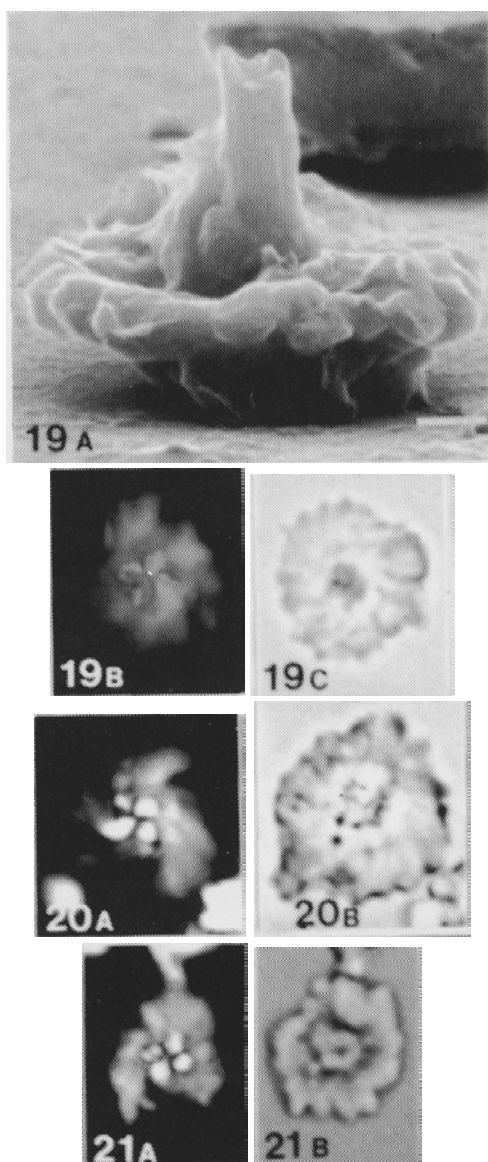


65. *Pickelhaube umbellatum* Bergen (1994)



Pl. 1, figs 19a-c, 20a-b, 21a-b

Derivation of name: Latin. *umbella* = parasol, sunshade.

Diagnosis: An irregular-shaped species of *Pickelhaube* with two faintly birefringent shields of low element number; the proximal shield elements are strongly curved.

Description: Medium to large placolith constructed of two faintly birefringent shields. The larger proximal shield is constructed of 13-19 elements with strongly curved sutures. The horizontal periphery is highly irregular, although the outline is basically sub-circular to circular. The small, narrow distal shield is about 1/3-1/4 the size of the proximal shield. A brightly birefringent central cross nearly fills the small central area and has arms that taper to points. A long, proximally-directed stem is present on

some specimens and appears to have octoradiate symmetry. Size of observed specimens: 6.4-8.8 μm .

Remarks: *Pickelhaube furtiva* (Roth) has brightly birefringent shields, a smooth horizontal peripheral outline, and radial proximal shield elements.

Range: Rare, extremely short stratigraphic range within the middle lower Valanginian. DSDP Site 534: Sample 79-5, 120-123cm; SE France (Angles, 100% Sa): Bed 258 to 274 (lower *campylotoxum* Zone).

Holotype: Plate 1, figs. 19a-c; DSDP Site 534, Core 79-5, 120-123cm.

Bergen, J.A., 1994. Berriasian to Early Aptian calcareous nannofossils from the Vocontian Trough (SE France) and Deep Sea Drilling Site 534: New nannofossil taxa and a summary of low-latitude biostratigraphic events. *Journal of Nannoplankton Research*, **16(2)**: 59-69.