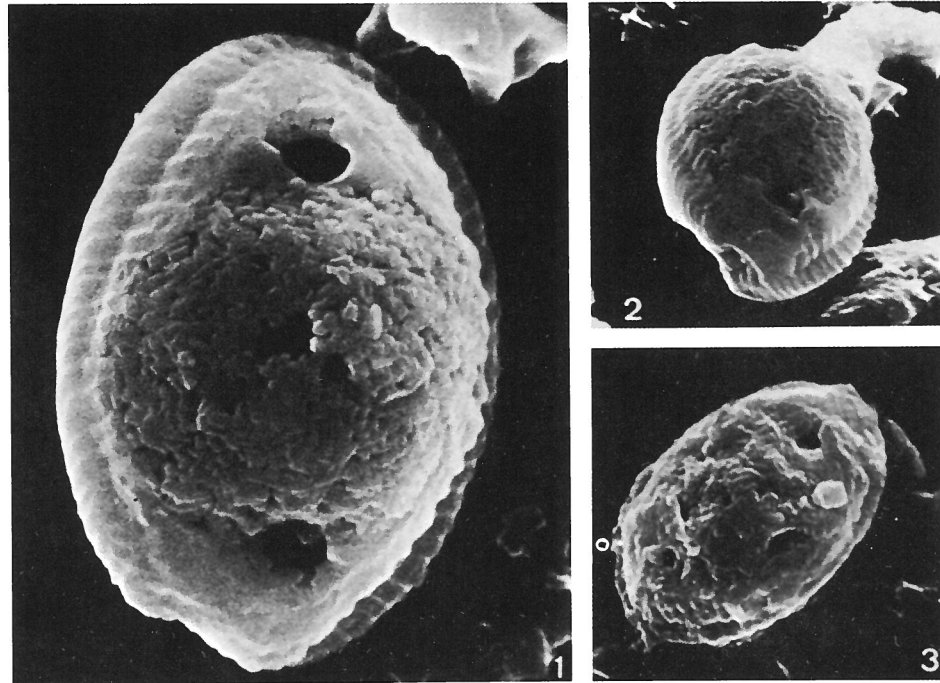


?*Podorhabdus elkefensis* PERCH-NIELSEN, 1981



Figs. 1-3 - ?*Podorhabdus elkefensis* n. sp. Distal views. Holotype: Figures 1,2 (turned specimen). 630/LM9 and 553; $\times 10,000$ (Fig. 1) and $\times 5000$.

Description:

Diagnosis: A large elliptical coccolith with a high rim (remainder of a shield?) consisting of numerous elements. The central area is spanned by a domeshaped structure consisting of very small elements and pierced by two perforations situated at opposite ends of the central area along the long axis.

Description: The high rim consists of about 50 to 60 vertically oriented elements forming a conical base. The central area is covered by a domeshaped structure with a nearly round outline and consisting of very small, randomly (?) oriented elements. The two perforations are each bordered by a ring of elements and lie in the ends of the central area not occupied by the domeshaped structure. No proximal view or light microscope observations are available.

Remarks:

?*Podorhabdus elkefensis* seems a unique form and probably does not belong to *Podorhabdus* or any other known genus. It was tentatively assigned to this genus because of the two perforations (see definition of *Podorhabdus* in Wise & Wind 1977, p. 305) in the central area. One also can argue that the domeshaped structure replaces the usual central process of *Podorhabdus*. The rim, however, does not resemble the typical

podorhabdid rim (two closely appressed single cycle shields constructed of nonimbricate or slightly imbricated elements). The rim has some resemblance to the two-level rim of *Teichorhabdus*, a genus twice the size of our form and with a similar number of rim elements but with more than 12 perforations and a granular stem.

Type level:

Late Maastrichtian; *Micula prinsii* Zone.

Occurrence: ?*Podorhabdus elkefensis* was so far only found in the upper Maastrichtian samples LM9 and 553 from E1 Kef, Tunisia.

Type locality:

E1 Kef, Tunisia.

Depository:

ETH SEM Archive, Honggerberg, Zurich.

Holotype: Negatives 6-3331/7 and 8, figs. 1,2.

Author:

Perch-Nielsen K., 1981, p. 842; pl. 1, figs. 1-3.

Reference:

New Maastrichtian and Paleocene calcareous nannofossils from Africa, Denmark, the USA and the Atlantic, and some Paleocene lineages. *Eclogae geol. Helv.*, vol. 74/3, pp. 831-863, 7 pls., 14 text-figs.