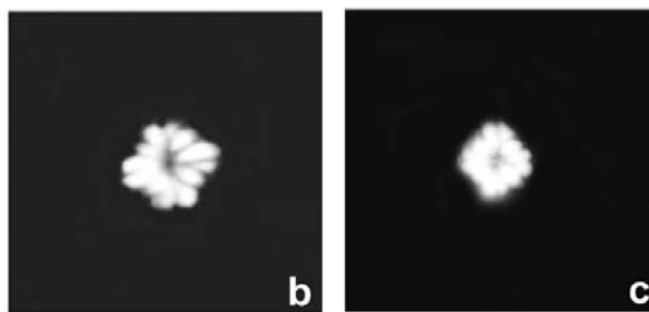


171. *Polycostella? prossii* Herrle & Mutterlose (2003)



Figs 8b, c

**Derivation of name:** Named in honour of Dr Jörg Pross, palynologist.

**Holotype:** Fig. 8b

**Isotype:** Fig. 8c

**Type locality:** Tarendol, southeast France, sample LF 181/2/98, uppermost Aptian.

**Diagnosis (light microscope):** Small nannolith, tentatively assigned to the genus *Polycostella* because it has 12 broad, radially organized, club-like elements that are arranged symmetrically with respect to the long and short axes and display a high birefringence.

**Length:** 2.6–3.1  $\mu\text{m}$ ; width 2.8–3.3  $\mu\text{m}$ .

**Occurrence:** *Rhagodiscus angustus*–*Prediscosphaera columnata* calcareous nannofossil zones (Upper Aptian), Serre Chaitieu, Tarendol (SE France).

Herrle, J.O. & Mutterlose, J., 2003. Calcareous nannofossils from the Aptian–Lower Albian of southeast France: palaeoecological and biostratigraphic implications. *Cretaceous Research*, **24**: 1–22.