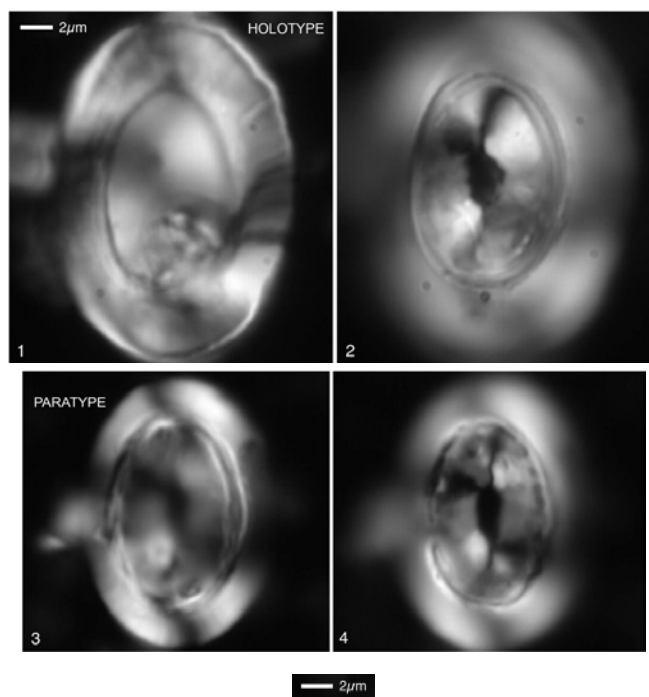


75. *Pontosphaera brinkhuisii* Bown & Newsam (2017)



Pl. 6, fig. 1–4

Figs 1, 2. 1409A-7-CC. Figs 3, 4. 1409-A-7-4, 57.

Derivation of name: Named after Dan Brinkhuis (Science Media NL, The Netherlands), Exp. 342 videographer and film maker.

Diagnosis: Very large, elliptical pontosphaerid with broad, high rim and narrow, apparently vacant central area.

Remarks: Possibly the taxon that Bralower & Mutterlose (1995) call *Reticulofenestra "grandis"* with a reported range of Zones NP15–16.

Differentiation: Distinguished from other *Pontosphaera* by larger size, thick rim cycles and vacant central area.

Dimensions: Holotype L= 21.2 μm (Paratype L=17.1 μm).

Holotype: Pl. 6, figs 1–2.

Paratype: Pl. 6, figs 34.

Type locality: IODP Hole U1409A, NW Atlantic Ocean.

Type level: Middle Eocene, Sample U1409A-7H-CC (Subzone NP15b).

Occurrence: Subzone NP15b-16; IODP Sites U1408, U1409

Bown, P.R. & Newsam, C., 2017. Calcareous nannofossils from the Eocene North Atlantic Ocean (IODP Expedition 342 Sites U1403–1411). *Journal of Nannoplankton Research*, **37(1)**: 25–60.