

Pontosphaera crucifera ROTH, 1970

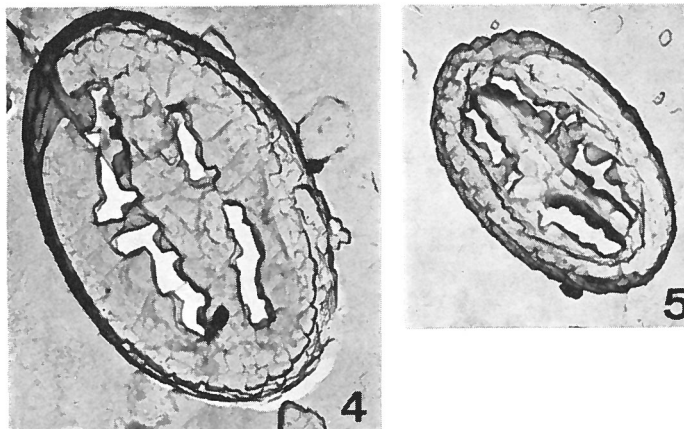


Fig. 4 — *Pontosphaera crucifera* n. sp. Holotype A 613 652 [A 858], x 15000, proximal view, Red Bluff Fm., 13' above base, Alabama.
Fig. 5 — *Pontosphaera crucifera* n. sp. Paratype A 613 643 [A 859], x 15000, distal view, Red Bluff Fm., 13' above base, Alabama.

Description:

Diagnosis: A narrowly elliptical small species of *Pontosphaera* with a cross structure in the central opening and short stubs protruding into it.

Description: The rim is rather low and consists of about 44-50 laths which are inclined clockwise as seen from the proximal side. The bottom of the shield is composed of an outer cycle of about 40-50 granules and an inner cycle of about 30-40 wedge-shaped plates about half of which are continuous with short stubs that project into the central slots. The cross in the center displays a broad arm in the long axis of the ellipse and a less pronounced one in the short axis. On the distal side only a narrow cycle of strongly dextrally inclined laths surrounds the central depression with the cross and the indentations.

Length: holotype 3.5 μ , paratype 2.5 μ .

Remarks:

This species differs from *Transversopontis zigzag* ROTH & HAY in having bridges in the axis of the ellipse, and in being smaller. *Transversopontis zigzag* has a more or less diagonal bridge.

Type level:

Red Bluff, Fm. 13' above base. Oligocene.

Type locality:

The Lone Star Cement Company Quarry, St. Stephens, Alabama, U.S.A.

Distribution: JOIDES Hole 5: From the *E. subdisticha* Zone into the *R. laevis* Zone. Alabama: *E. subdisticha* Zone.

Depository:

Basle Natural History Museum. Holotype: IMS-A 613652 [A 858]; paratype: IMS-A 613645 [A 859].

Author:

Roth P. H., 1970, p. 860; pl. 9, figs. 4, 5.

Reference:

Oligocene Calcareous Nannoplankton Biostratigraphy. Ecl. geol. Helv., vol. 63, n° 3, pp. 799-881, pls. 1-14, text-figs. 1-17.