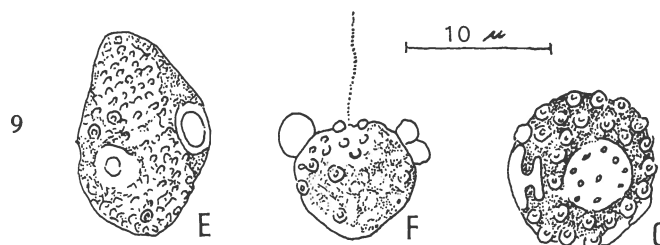


Pontosphaera ditrematolitha BURSA, 1961



Figs. 9e-g — *Pontosphaera ditrematolitha*.

Description:

Spherical and subspherical cells easily distinguished by their large trematoliths, found mostly as 2 in each cell. Apart from large trematoliths, very small coccoliths also found. These arranged spirally (fig. 9e) except in the apical area, where absent. The trematoliths of some cells with a large unperforated margin (fig. 9e), while in some individuals, from 3 to 10 perforations observed. Such trematoliths in side view (fig. 9g) deeply incised, and both their top and bottom surfaces joined with a columella. Nucleus apical. Large lateral chromatophore. Single flagellum emerging from the apex.

Size: spherical forms from 9 to 16 μ , subspherical forms from 6 to 12 μ .

Type level:

Recent.

Occurrence: August.

Type locality:

Igloolik (Canadian Arctic).

Depository:

Not given.

Author:

Bursa A.S., 1961, p. 596, figs. 9 e-g.

Reference:

The annual oceanographic cycle at Igloolik in the Canadian Arctic. II. The phytoplankton. J. Fish. Res. Board Canada Vol. 18, n° 4, pp. 563-615, figs. 1-21.