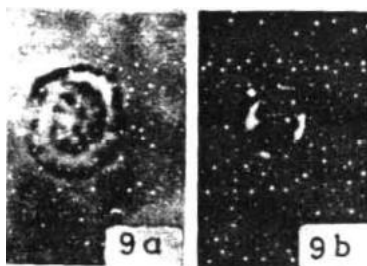


38. *Pontosphaera minuta* El-Dawoody (1988)



Pl. 2, fig. 9

**Description:** Elliptical discoliths small, with a thin plate and wide rim. Central area regularly perforated by about 10–12 pores, two of these pores are larger and restricted to the center while the remaining ones surround them in a smaller ellipse. It is bisected by a longitudinal line, interrupted in the middle by two pores.

**Dimensions:** Length = 5.00  $\mu$ , Width = 4.00  $\mu$ .

**Derivation of name:** Descriptive name.

**Locus typicus:** Gebel Duwi

**Stratum typicum:** Sample 9/D, Esna Shale

**Remarks:** This species is characterized by its small size and wide rim. The longitudinal line has two large pores in the central area.

**Occurrences:** This species occurs commonly throughout the upper part of *Discoaster multiradiatus* zone, but rarely found in the overlying *Tribrachiatus contortus* zone of Late Paleocene (Landenian) age at Gebel Duwi.

El-Dawoody, A.S., 1988. New calcareous nannoplankton species from the Paleocene rocks in southern Egypt. *Bulletin of the Faculty of Science, Cairo University*, **56**: 549-564.