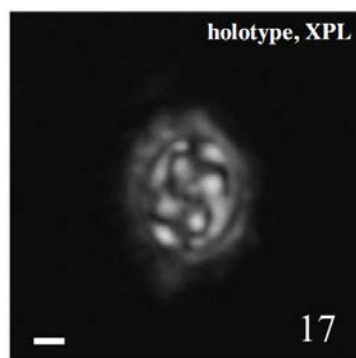


58. *Prediscosphaera quasispinosa* Fernando & Okada (2007)



Pl. 1, fig. 17

Scale bar=1µm

Plate 1. XPL = cross-polarised light; PC = phase-contrast; BF = bright-field.

Fig. 17. *Prediscosphaera quasispinosa*, Sample US-062, Gas Point Member, Budden Canyon Formation, GVS, California.

**Derivation of name:** From the Latin *quasi*, meaning 'having similarities to', referring to its resemblance in appearance to *P. spinosa*.

**Diagnosis:** A small, (normally) elliptical species of *Prediscosphaera*, which has a thick inner-cycle and a thick, subaxial central cross, occupying most of the central area.

**Remarks:** *P. quasispinosa* most closely resembles *P. spinosa* with regards to basic morphology. They are similar in that the cross-bars of *P. spinosa* could either be axial or not perfectly aligned with the major and minor axes of the ellipse (Gartner, 1968; Bukry, 1969). However, the general outline of the two taxa is different (i.e. *P. spinosa* is rectangular in outline), and the cross-bars and inner cycle of *P. spinosa* are narrower than those of *P. quasispinosa* (see Pl. 1, fig. 18 for comparison). *P. cretacea*, another elliptical form, has cross-bars that are not aligned with the major and minor axes of the ellipse (Pl. 1, fig. 19). The recorded distribution of *P. quasispinosa* is, at present, restricted to northern California, although J. Self-Trail (pers. comm., 2007) has also observed *P. quasispinosa* from sediments of Cenomanian age of the Atlantic Coastal Plain.

**Dimensions:** Length = 5µm; width = 4µm.

**Holotype:** Pl. 1, fig. 17, Sample US-062 (northern California).

**Type locality:** North Fork Cottonwood Creek section, Ono Quadrangle, Shasta County, northern California (Great Valley Sequence), USA. Sec.21 of T.30N., R.6W. (Murphy et al., 1969).

**Type level:** Upper Cenomanian, Sample US-062, Gas Point Member, Budden Canyon Formation (nannofossil subzone UC3e of Burnett, 1998).

**Occurrence:** UC3e-UC5c in California (Fernando, 2006; Fernando et al., subm.).

Fernando, A.G.S. & Okada, H., 2007. New calcareous nannofossil species from the Cretaceous Budden Canyon Formation, Great Valley Sequence, northern California (USA). *Journal of Nannoplankton Research*, **29(1)**: 1-4.