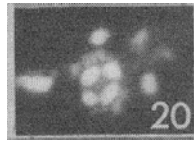
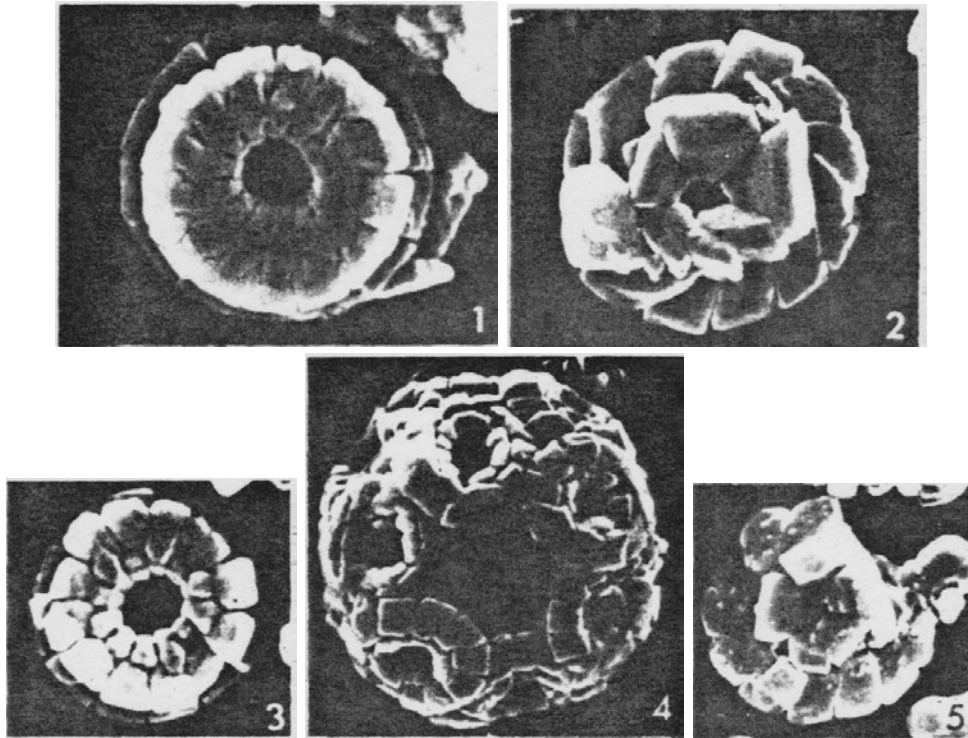


73. *Prinsius rosenkrantzii* Perch-Nielsen (1979)



Pl. 2, fig. 20

Fig. 20. *Prinsius rosenkrantzii* n. sp., LM 3200x, crossed nicols, 399.



Pl. 4, figs 1-5

Figs. 1-5: *Prinsius rosenkrantzii* n. sp., 10 000x and 8000x (Fig. 4, holotype); proximal-views, 399; (1, 3; note double proximal shield) and distal views, 142/10, 364/1.

Holotype: Pl. 4, Fig. 4.

Type level: Danian.

Type locality: Fakse, Denmark.

Diagnosis: A round or nearly round form of *Prinsius* with a central opening, a double proximal shield and more or less radial distal central elements.

Description: The distal shield consists of usually 10-15 adjacent or slightly overlapping elements and is larger than the proximal shield. The latter consists of two cycles of radially oriented elements. The inner cycle varies in radius and surrounds the central opening on the proximal side. Distally, the central opening is surrounded by a cycle of more or less radially oriented, blocky elements.

Remarks: The new species is comparable in size with *P. dimorphosus*, which is elliptical and already occurs earlier. The centre is usually closed in *P. dimorphosus* and surrounded by one or two cycles of tangentially oriented, overlapping elements on the distal side.

P. martinii also is elliptical and larger.

Occurrence: *P. rosenkrantzii* (name after the late Prof. A. Rosenkrantz, Copenhagen) was found in the upper Danian of Denmark, where it often occurs as a dominant form of the assemblage.

Perch-Nielsen, K., 1979. Calcareous nannofossil zonation at the Cretaceous/Tertiary boundary in Denmark. In: Birkelund, T. and Bromley, R.G. (eds). Proceedings Cretaceous-Tertiary Boundary Events Symposium, Copenhagen, 1, Copenhagen, pp. 115-135.