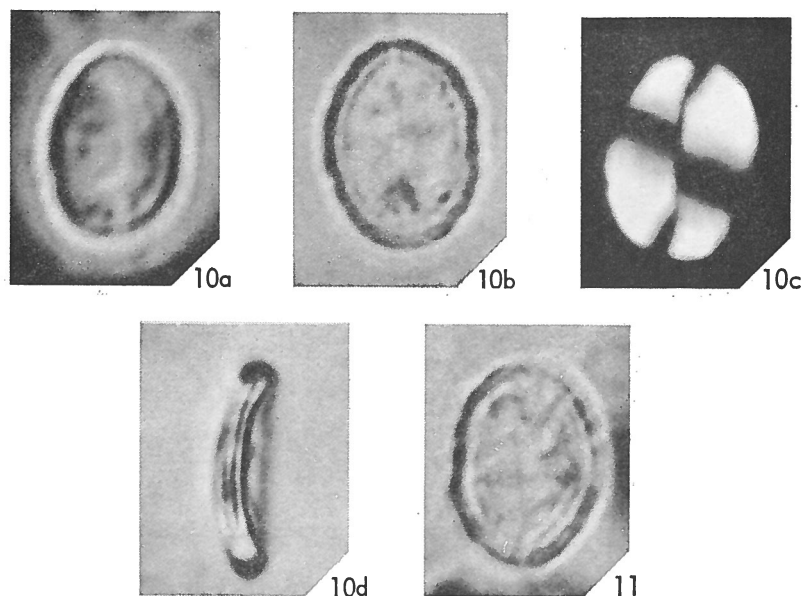


***Prolatipatella multicarinata* GARTNER, 1968**



FIGS. 10a-d, 11 — *Prolatipatella multicarinata* GARTNER, n. sp., specimens from Corsicana Marl of Texas, distal (10a-c), side (10d), and proximal (11) views, light micrographs, phase contrast (10a), transmitted light (10b, d, 11), cross-polarized light (10c), x 2500.

Description:

Elliptical disc with narrow, multitiered rim and imperforate central area.

Description: The central plate of this elliptical disc is divided into 2 equal parts by a median suture. This suture is aligned with the major axis of the ellipse and can best be seen in the light microscope between crossed nicols. The narrow rim consists of at least 3 tiers, of which proximal tier is smallest, and the second and third tiers are progressively larger. The central plate appears to be on the level of the distal rim tier and is probably continuous with it.

Maximum diameter: 11.0 μ . Minimum diameter: 8.0 μ .

Remarks:

The picture taken between crossed nicols indicates that the disc is probably constructed by some sort of radial arrangement of elements, and the rim tiers are probably similar to the rim tiers in *Arkhangelskiella* although constructed of smaller elements. It is also possible that a fourth rim tier is present on the distal side but cannot be seen in side view as is often observed in *Arkhangelskiella*. Unfortunately, no electron micrographs were obtained of this species so that a more restricted definition of this species is not now possible.

Type level:

Upper Cretaceous (Navarroan).

Type locality:

Corsicana Marl of Texas, U.S.A.; sample COR.

Depository:

Department of Geology, University of Illinois. Holotype: UI-H-2237 (figs. 10a-d, 11).

Author:

Gartner S., Jr., 1968, p. 41; pl. 7, figs. 10a-d, 11.

Reference:

Coccoliths and related calcareous nannofossils from Upper Cretaceous deposits of Texas and Arkansas. Univ. Kansas Paleont. Contr., Serial n° 48, Protista, Art. 1, pp. 1-56, pls. 1-28, text-fig. 1-5.