

Pyrobolella bradfieldii BLACK, 1971

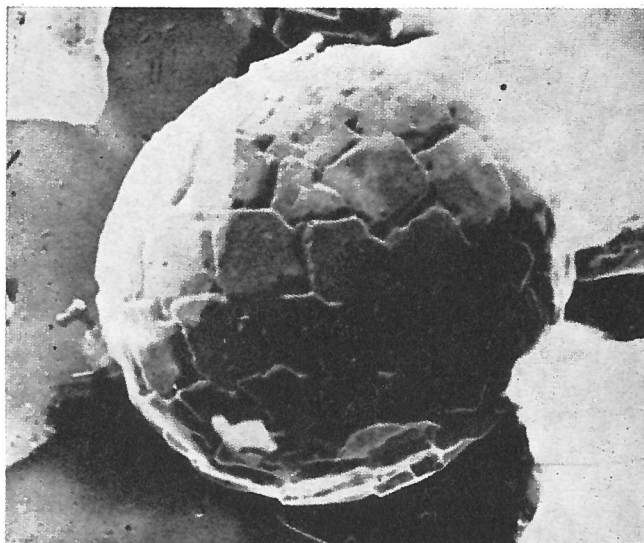


Fig. b — *Pyrobolella bradfieldii* n. sp. Upper Gault, Bed XIII, from the shore at East Wear Bay, Folkestone. Holotype No. 28224. x 10,000.

Description:

Approximately spherical microfossils without an aperture and covered with a mosaic of unperforated polygonal calcite plates.

Dimension of holotype: 5.8×6.0 microns.

Type level:

Middle and Upper Albian. Gault Clay.

Type locality:

Upper Gault, Bed XIII, at Folkestone, Kent, England.

Depository:

Sedgwick Museum, Cambridge. Holotype: SM 28224.

Author:

Black M., 1971, p. 327; pl. 2, fig. b.

Reference:

Problematical microfossils from the Gault Clay. Geol. Mag., vol. 108, n° 4, pp. 325-327, pls. 1-3.