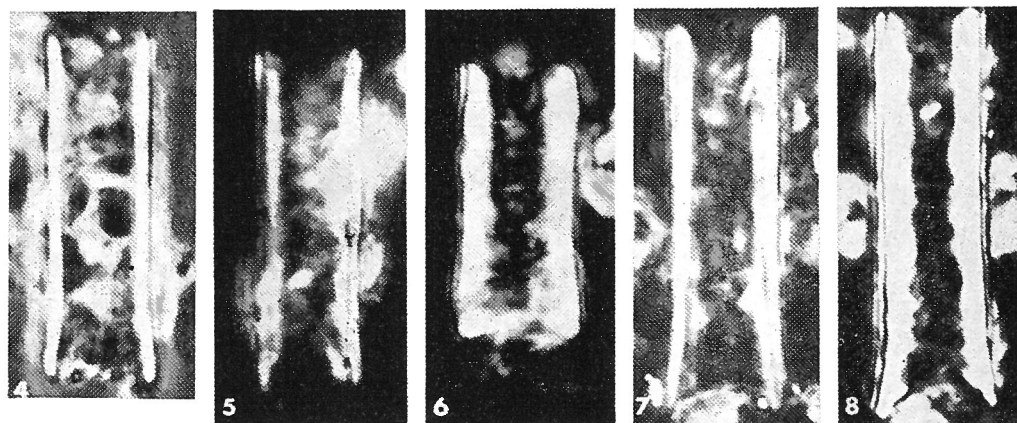


Scyphosphaera columella STRADNER, 1969

Lopadolith from Lodo 39''; Bramlette and Sullivan, 1961, pl. 5, fig. 19. Micropaleontology, vol. 7.



Figs. 4-8 — *Scyphosphaera columella* STRADNER, n. sp.; 4) positive phase contrast, 5) crossed nicols, 6) crossed nicols, 7) anoptral contrast, 8) crossed nicols. x 2800.

Description:

Diagnosis: Lopadoliths tube-shaped with almost parallel side lines, only slightly constricted above the somewhat widening bottom-end, which is closed by an inward vaulted plate. No striation of tube or perforation of bottom plate discernable.

Type level:

Lower Eocene.

Type locality:

Hagembach Valley, Northern Vienna Woods, Stat. 400, Lower Austria.

Depository:

Geologische Bundesanstalt, Wien. Holotype: HV 1968/2 (figs. 7-8).

Author:

Stradner H., 1969, p. 416; pl. 88, figs. 4-8.

Reference:

The Nannofossils of the Eocene Flysch in the Hagembach Valley (Northern Vienna Woods), Austria. Annales de la Société Géologique de la Pologne, vol. 39, pp. 403-432, pls. 1-10, 4 text-figs.