

NANNOTAX CATALOG - *Scyphosphaera hamptonii*

Folder trail: [Farinacci](#) -> [S](#) -> [Scyphosphaera](#) -> [Scyphosphaera hamptonii](#)

Folders this level: << < [S. graphica](#), [S. halldali](#), **[S. hamptonii](#)**, [S. hemirana](#), [S. intermedia](#), > >>



daGama & Varol 2012 pl3
02.jpg



daGama & Varol 2012 pl3
01.jpg



daGama & Varol 2012 pl3
03.jpg



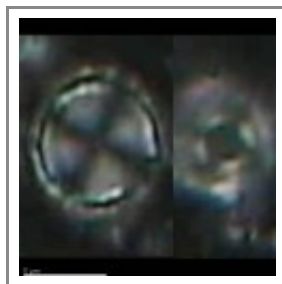
daGama & Varol 2012 pl3
04.jpg



daGama & Varol 2012 pl3
05.jpg



daGama & Varol 2012 pl3
06.jpg



daGama & Varol 2012 pl3
07-8.jpg

Current identification/main database link:

Compiled data

Citation: *Scyphosphaera hamptonii* da Gama & Varol 2012

Rank: Species

Type locality: Arabian Sea, W. Indian Ocean

Type level: Zone NN11, Late Miocene

Standardised type level: 123_UPPER MIOCENE

Type sample: DSDP, site 231-34-3, 42-47cm

Type repository: authors collection

Repository Country: USA

Original Description

Diagnosis: A lophadolith in which the wall extends from a circular proximal base at an angle outwards a short distance and then vertically upwards.

Description: This small species of *Scyphosphaera* has a circular and flat proximal base with a short but distinct outward jutting edge. A cylindrical wall extends from the edge and terminates without any outer flaring or inward curvature. The outer surface of the wall is heavily ornamented. The minimum diameter of the species lies at the proximal base.

Size: holotype: Maximum Length: 10.0µm Maximum Width: 6.8µm

Etymology: In honour of Matthew Hampton, nannofossil specialist and good friend, Network Strati- graphic Consulting Ltd, Potters Bar, UK.

Extra details from original publication

Remarks: *Scyphosphaera hamptonii* is distinguished from *Scyphosphaera cylindrica* by having a circular proximal base whereas the latter has an elliptical proximal base. Moreover, the outer surface of this new species is more heavily ornamented and it is much smaller than *S. cylindrica*. The proximal base of

Scyphosphaera globulata is also circular but the overall shape is globular whereas the overall shape of *S. hamptonii* is cylindrical.

Occurrence: *S. hamptonii* was recovered from NN11 sediments and is Late Miocene in age. It was recorded from the Gulf of Aden, Vietnam, Malaysia, Indonesia, Philippines, West Africa, North Africa, Brazil and Trinidad.

References:

da Gama, R. O. B. P. & Varol, O. (2012). New Late Oligocene to Miocene Species. *Journal of Nannoplankton Research*. **33**(1): 1-12.
[gs](#)



nannotax

Scyphosphaera hamptonii: Catalog entry compiled by Anna Farinacci and Richard Howe.
Viewed: 27-10-2019

Taxon Search: [Advanced Search](#)

Link to [WoRMS](#) (World Register of Marine Species)

Powered by *Mikrotax* taxonomy content management system developed by Jeremy Young