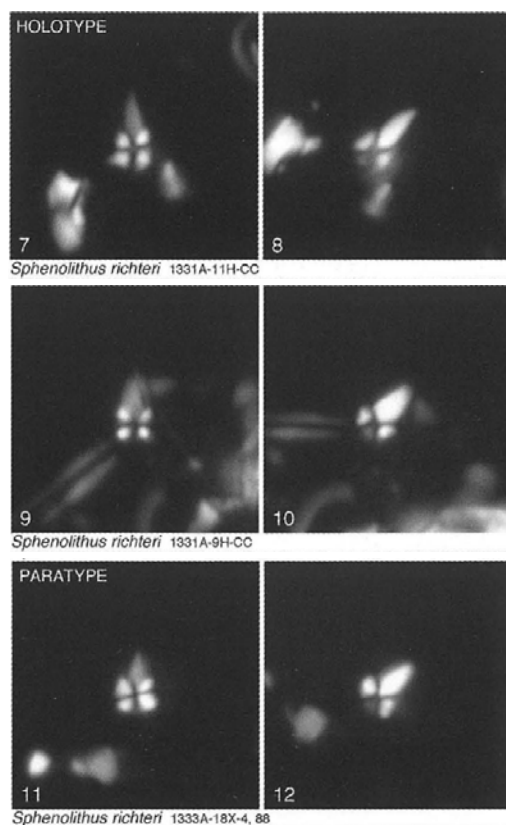


87. *Sphenolithus richteri* Bown & Dunkley Jones (2012)



Pl. 11, figs 7-12

Derivation of name: Named after Carl Richter (University of Louisiana, USA), Exp. 320 shipboard scientist and palaeomagnetist.

Diagnosis: Small narrow sphenolith with square base, comprising equidimensional quadrants, and tapering monocrystalline spine that is dark at 0° and bright at 45°.

Differentiation: Quite distinct from other Eocene sphenoliths, but somewhat similar to Miocene *S. heteromorphus* but the base is square.

Dimensions: L = 4.3µm (Paratype L = 3.3µm).

Holotype: Pl. 11, fig. 7.

Paratype: Pl. 11, fig. 11.

Type locality: IODP Hole U1331A, Pacific Ocean.

Type level: Middle Eocene, Sample U1331A-11H-CC (Zone NP16).

Occurrence: Zone upper NP15-Zone NP16; IODP Sites U1331 (NP16), U1332 (one upper NP16 sample), U1333.

Bown, P.R. & Dunkley Jones, T., 2012. Calcareous nannofossils from the Paleogene equatorial Pacific (IODP Expedition 320 Sites U1331-1334). *Journal of Nannoplankton Research*, **32(2)**: 3-51.