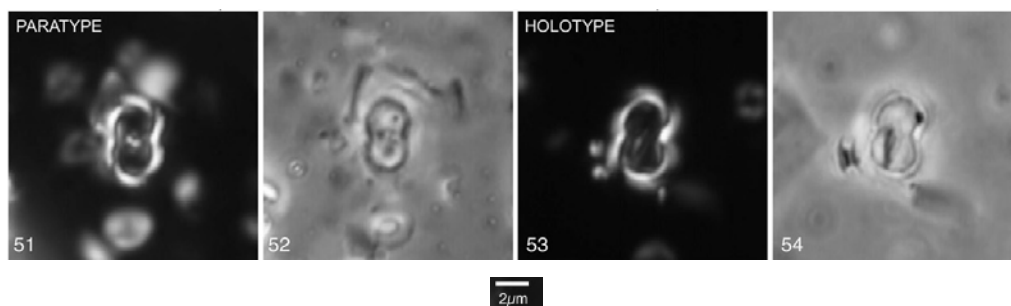


93. *Syracosphaera octiforma* Bown & Newsam (2017)



Pl. 9, figs 51–54

Figs 51, 52. 1408A-4-CC. Figs 53, 54. 1408A-4-CC.

**Derivation of name:** From *octi*, meaning 'eight', and '*forma*' meaning form, referring to the distinctive outline of this species.

**Diagnosis:** Narrow rimmed coccolith with figure-of-eight outline (indentations on each side). In XPL the rim is relatively bright and there may be a spine in the central area, which is otherwise unclear.

**Remarks:** We tentatively assign this species to *Syracosphaera* based on the rim image in XPL.

**Differentiation:** Distinguished from most other coccoliths by its distinctive outline.

**Dimensions:** Holotype L = 5.5 μm (Paratype L = 5.2 μm).

**Holotype:** Pl. 9, figs 53–54.

**Paratype:** Pl. 9, figs 51–52.

**Type locality:** IODP Hole U1408A, NW Atlantic Ocean.

**Type level:** Upper Eocene, Sample U1408A-4H-CC (Zone NP17).

**Occurrence:** Zone NP16–17; IODP Sites U1408, U1410.

Bown, P.R. & Newsam, C., 2017. Calcareous nannofossils from the Eocene North Atlantic Ocean (IODP Expedition 342 Sites U1403–1411). *Journal of Nannoplankton Research*, **37(1)**: 25–60.