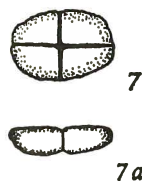


Tetralithus ovalis STRADNER, 1963



FIGS. 7, 7a — *Tetralithus ovalis* nov. spec.,
7) plan view, 7a) side view; x 4000.

Description:

Flat tetraliths consisting of four sectors fitting closely together to form a plate with oval circumference. The suture lines may lie in the main axes or diagonally or in between.

Type level:

Upper Turonian - Emscherian.

Type locality:

Klafterbrunn, Lower Austria (GRILL 4557/3/947).

Depository:

Geological Survey, Wien. Holotype KLB 5/B.

Author:

Stradner H., 1963, p. 12; pl. 6, figs. 7, 7a.

Reference:

New Contributions to Mesozoic Stratigraphy by means of Nannofossils. Proc. Sixth World Petrol. Congr. (Frankfurt a. M.), sect. 1, paper 4, 16 pp., 6 pls.