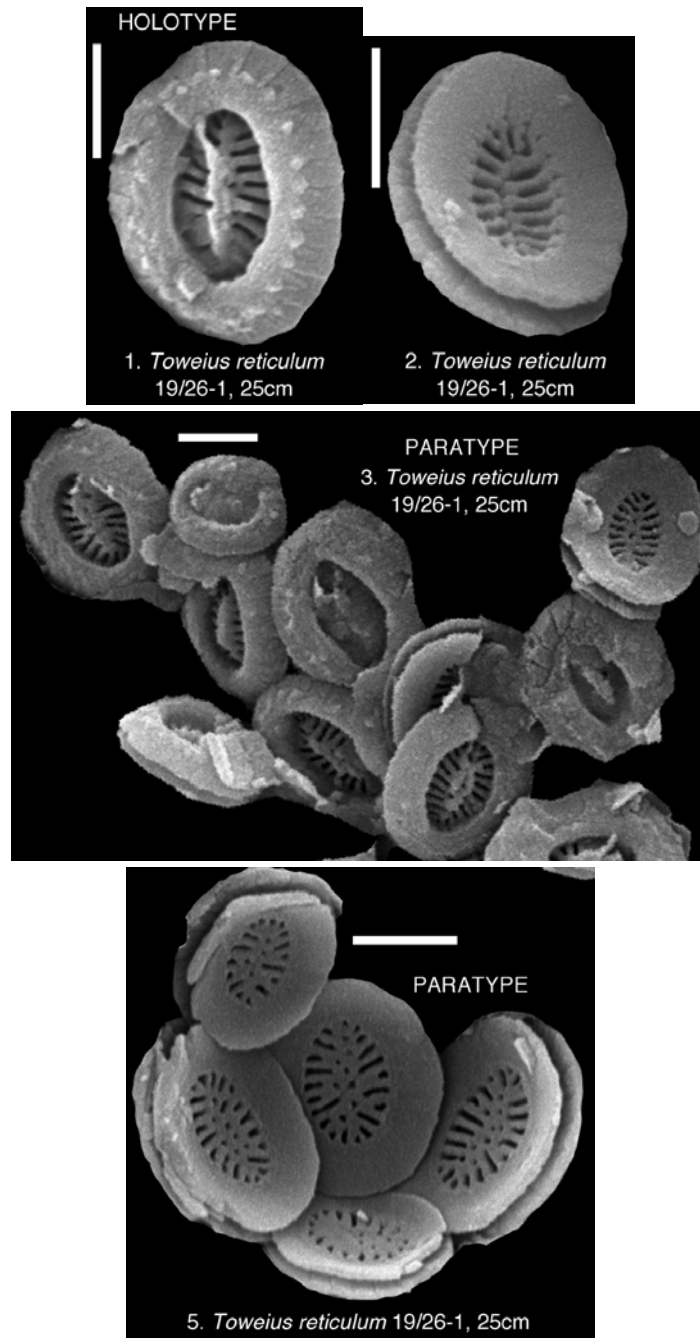


97. *Toweius reticulum* Bown (2016)



Pl. 10, figs 1–3, 5

Derivation of name: From *reticulum*, meaning ‘little net’, referring to the reticulate central area structure of this species.

Diagnosis: Very small *Toweius* (1.8–3.0 μ m) with relatively wide central area (width similar to or slightly greater than the rim) spanned by a grill formed from radial bars that merge to form a central longitudinal bar or plate, which may be perforate.

Remarks: This species has not been unambiguously identified in LM due to its small size,

but is likely one of the taxa commonly informally grouped as small *Toweius*.

Differentiation: Distinguished from other *Toweius* by the small size and central area grill predominantly composed of radial, lath-like bars. Somewhat similar to Eocene specimens described as *Cyathosphaera martinii* Hay & Towe, 1962, but *T. reticulum* has thicker central area bars and a central longitudinal structure with pores. In addition, the generic affinity of *C. martinii* is uncertain and it may be a small reticulofenestrid.

Dimensions: L = 2.5 μ m.

Holotype: Pl. 10, fig. 1.

Paratypes: Pl. 10, fig. 3; Pl. 10, fig. 5.

Type locality: TDP Site 19, Pande, Tanzania.

Type level: Upper Paleocene, Sample TDP19/26–1, 25cm (Zone NP6).

Occurrence: Zone NP6; TDP Site 19.

Bown, P.R., 2016. Paleocene calcareous nannofossils from Tanzania (TDP sites 19, 27 and 38).
Journal of Nannoplankton Research, **36(1)**: 1–32.