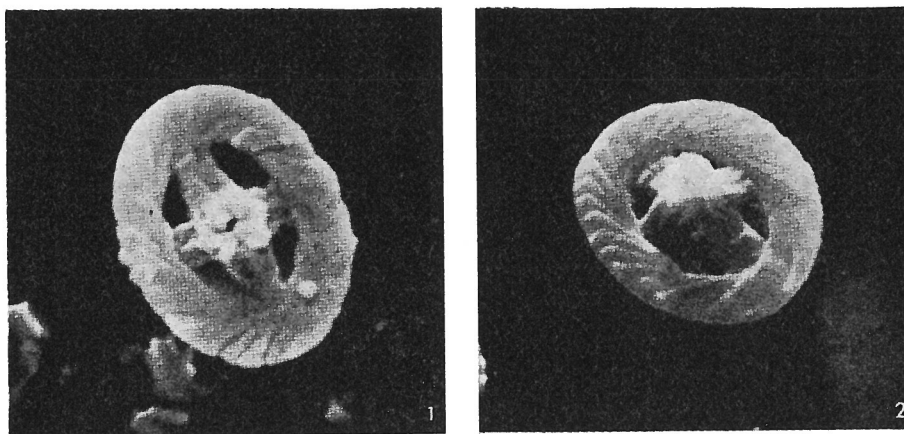


Vagalapilla solida FORCHHEIMER, 1972



Figs. 1-2 — *Vagalapilla solida* n. sp., Köpingsberg 1, Albian; 1) 0°, distal view, Coll. no.: S Kp 318 80a/14, x 8,300; 2) 7,800 x, 45°, distal view, Coll. no.: S Kp 94 7a/26, x 7,800.

Description:

Diagnosis: Elliptical coccoliths with a rather broad rim cycle. The central area occupies about 25 percent of the coccolith area. A broad massive crossbar is aligned with the axes of the ellipse. A perforation in the centre and a central process are present.

Description: *Vagalapilla* species seen in distal view shows a rim composed of about 38 inclined elements. The open central area is spanned by crossbars with a width of 0.8 μ . The micrograph in fig. 1 shows a perforation in the centre of the process.

Remarks:

Vagalapilla solida n. sp. differs from *V. elliptica* (GARTNER, 1968) BUKRY, 1969 in having a cross with bars perpendicularly intersecting. Micrographs in pl. 32, figs. 11-12 (Bukry, 1969) show *V. elliptica* (GARTNER 1968) BUKRY, 1969 with bars evidently dissimilar to those of *V. solida* n. sp. The present author proposes therefore a new species for specimens with a straight, massive cross, broad rim and rather small central area.

Type level:

Albian.

Occurrence: Köpingsberg Borehole No. 1: Aptian - Albian.

Type locality:

Köpingsberg Borehole No. 1, 846.4 m, Sweden.

Depository:

Museum of the Geological Survey of Sweden, Stockholm.

Holotype: specimen No. S Kp 318 80a/14, paratype: specimen No. S Kp 94 7a/26.

Author:

Forchheimer S., 1972, p. 66; pl. 23, figs. 1-2.

Reference:

Scanning electron microscope studies of Cretaceous Coccoliths from the K pingsberg borehole n  1, SE Sweden. Sver. Geol. Unders k. Ser. C, n  688, Arsb. 65, n  14, pp. 1-141, pls. 1-27, text figs. 1-12.