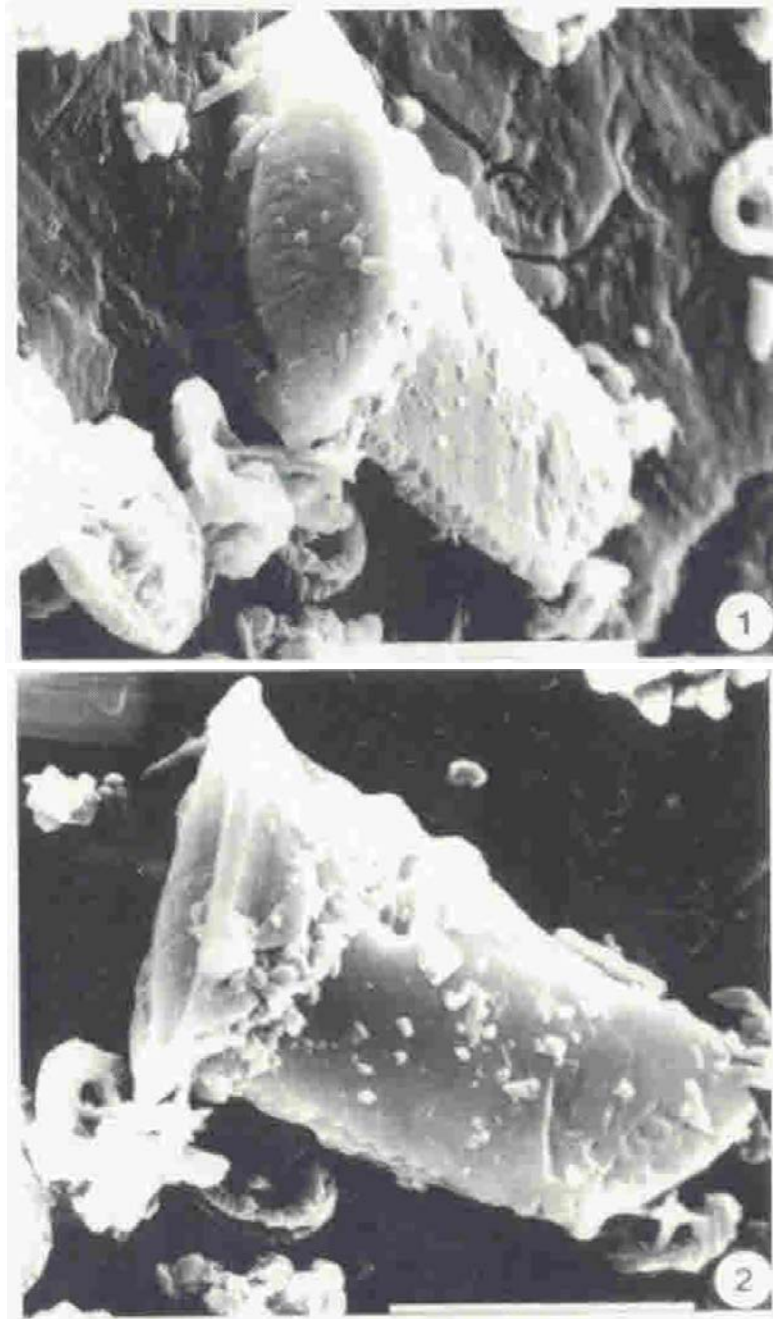
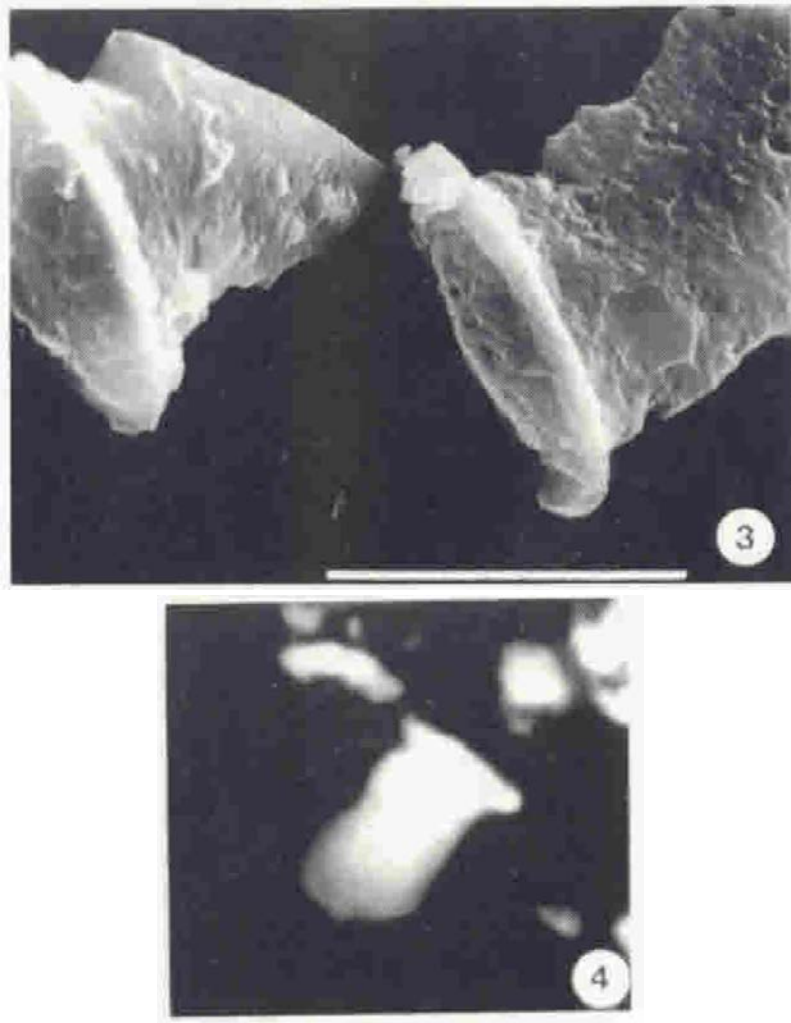


239. *Watkinsia pedalion* Covington (1994)





Pl. 4, figs 1-4

Derivation of name: From *πεδάλιον* (Greek)-rudder.

Description: In side view, this taxon resembles the centreboard or rudder of a sailboat. In assumed proximal view, it exhibits an elliptical base. The base has a convex central area, surrounded by a flat rim, the width of which is approximately 22% of the total width of the short axis of the base. There are no discernible elements forming the base. The "rudder" projects perpendicularly from the plane of the base. It flattens and thins distally and exhibits an irregular outline when viewed in a plane parallel to the base.

Remarks: When observed in side view under the light microscope, the irregular outline and lack of a distinguishing interference pattern make this species appear as a flat piece of calcite (Plate 4, figure 4) and hence, difficult to identify. It goes extinct as a unit in cross-polarized light.

Occurrence: Rare to few in the Santonian of the Niobrara Formation of northwestern Kansas, Western Interior, U.S.A.

Size: Holotype: 15 μ m across the base, 21 μ m along the axis perpendicular to the base, and

10µm (mean) across the flat "rudder".

Holotype: Plate 4, figures 1-2.

Paratypes: Plate 4, figure 3.

Type locality: Location 18 (Hattin, 1982), 11 meters below Bed 27 (Sample 18/11-B27), Smoky Hill Member of the Niobrara Formation, northwestern Kansas, Western Interior, North America.

Covington, M., 1994. New taxa from the Niobrara Formation. *Journal of Nannoplankton Research*, **16(3)**: 121-131.