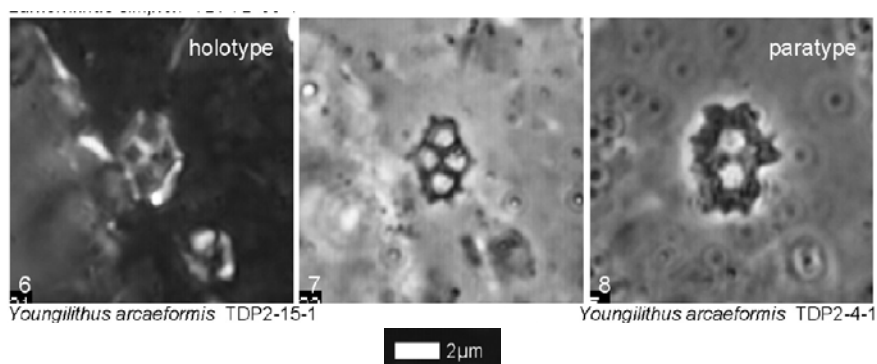


245. *Youngilithus arcaeformis* Bown (2005)



Pl. 30, figs 6-8

Derivation of name: From *arca(e)*, meaning box, chest or coffin, and *formis*, meaning in the shape of, referring to the distinct outline of this holococcolith.

Diagnosis: A polygonal, medium-sized, non-birefringent holococcolith with narrow rim spanned by diagonal crossbars. Rim coffin-shaped (like a diamond with flattened ends) and usually shows small, marginal projections.

Differentiation: Similar to *O. brytika* but with more geometric outline and with lateral rim spines.

Dimensions: L = 4.3-5.3 μ m.

Holotype: Pl. 30, fig.6 (fig.7 same specimen).

Paratype: Pl. 30, fig.8.

Type locality: TDP Site 2, near Kilwa, Tanzania.

Type level: Middle Eocene, Sample TDP2-15-1, 89cm (Subzone NP15b).

Occurrence: NP15b-c; TDP Site 2. Rare.

Bown, P.R., 2005: Palaeogene calcareous nannofossils from the Kilwa and Lindi areas of coastal Tanzania (Tanzania Drilling Project 2003-4). *Journal of Nannoplankton Research*, **27(1)**: 21-95.